

شركة نايب تيك للخدمات الصناعية ش.م.و Naibtech Industrial Services Company S.P.C

Fabrication, Offshore Contracting / EPC, Expert in welding of High Pressure Alloys SS, CS
Plant, Boiler & Tanks with Fabrication and Erection of Industrial & Housing Building Project



Expert in Welding of High Pressure Alloys SS, CS Plant, Boiler & Tanks Piping with Fabrication and Erection of Industrial & Housing Building Projects.

بِسْمِ اللَّهِ الرَّحْمَنِ الرَّحِيمِ

In the name of Allah, The Compassionate, The Merciful

COMPANY PROFILE

For Vendor Qualification

Team Information

Managing Director - CEO	Muhammad Saleem Mughal	00973 3322 0131
Director (Commercial & Gen Affairs)	Abdul Rehman - Mughal	00973 3301 4555
Business Development Manager	Mercedes B. Doctor	00973 6695 2244
QA/QC & Logisting	Muhammad Mubeen	00973 39616180
Sales & Marketing – Trading Div.	Irfan Sadiq	00973 38280510
Purchase / Procurement	Muhammad Mubeen	00973 3904 1099
Admin & Gen Affairs	HabibUllah	00973 3902 4834
Finance & Accounts	Muhammad Saleem	00973 36178111
Technica & Commercial	VIBIN V. R.	00973 38280409
Production (Factory) & Proejcts Div.	Asif Ali	00973 38280409
Logisting & Transportation	Qasim Ali Ebrahim YUSSUF	00973 3607 6677
General Property & real Estate Agent	ALI IMRAN	00973 33028707
IT Division	Azeem Nasir	00973 77166539
Fabrication SHOP - Incharge	SALEEM IQBAL	00973 38755416
Welding Shop - Incharge	ABDUR Rahim	00973 39009517

Branch Title Certificate of Registration: **105613-02**
A/c Name: **NAIBTECH Industrial Services Co. S.P.C.**
Bank A/C: **513 30210943 0014**
IBAN Number; **BH28 FIBH1330 2109 4300 14**
Swift Code; **FIBHBHBM** ,Branch: Sanad, Kingdom of Bahrain

Company Title Certificate of Registration: **105613-01**
A/c Name: **Golden Park Land Real Estate Co. S.P.C.**
Bank A/C: **513 30206203 0019**
IBAN Number; **BH28 FIBH 1330 20620300 19**
Swift Code; **FIBHBHBM** ,Branch: Sanad, Kingdom of Bahrain

شركة نيب تيك للخدمات الصناعية ش.م.و Naibtech Industrial Services Company S.P.C

Fabrication, Offshore Contracting / EPC, Expert in welding of High Pressure Alloys SS, CS
Plant, Boiler & Tanks with Fabrication and Erection of Industrial & Housing Building Project



Expert in Welding of High Pressure Alloys SS, CS Plant, Boiler & Tanks Piping with Fabrication and Erection of Industrial & Housing Building Projects.

CONTENTS

SECTION – I :	MESSAGE FROM THE PRESIDENT
SECTION – II:	COMPANY INTRODUCTION
SECTION – III:	FABRICATION & CONTRACTING DIVISION
SECTION – IV:	TRADING DIVISION – with PRODUCTS LIST
SECTION – V:	MFL TESTING & LED LIGHTING (Excusive Agent)
SECTION – VI:	ORGANIZATIONAL CHART
SECTION – VII:	GENERAL MEN WORKSHIP STRENGTH / RESOURCES
SECTION – VIII:	GENERAL ASSETS – TOOLS & EQUIPMENT RESOURCES
SECTION – IX:	SUMMARY OF EXECUTED PROJECTS (GCC)
SECTION – X:	COMPANY QUALITY POLICY
SECTION – XI:	SAFETY & LOSS PREVENTION PROGRAM
SECTION – XII:	A BRIEF LIST OF OUR GCC CUSTOMERS
SECTION – XIII:	METHOD OF OPERATING (TRADING DIVISION) (GENERAL PRODUCT CATALOGUE / BROCHURE)
SECTION – XIV:	PROJECTS HIGHLIGHTS – Imported Pictures

شركة نيب تيك للخدمات الصناعية ش.م.و Naibtech Industrial Services Company S.P.C

Fabrication, Offshore Contracting / EPC, Expert in welding of High Pressure Alloys SS, CS
Plant, Boiler & Tanks with Fabrication and Erection of Industrial & Housing Building Project



Expert in Welding of High Pressure Alloys SS, CS Plant, Boiler & Tanks Piping with Fabrication and Erection of Industrial & Housing Building Projects.

MESSAGE from the Board of Directors

NAIBTECH is a 100% GCC-Local owned General Contracting & Trading Company based in Bahrain, Kingdom of Bahrain. The firm was established in the year of 2000 through industrial city Jubail – Kingdom of Saudi Arabia.

Our firm has grown over the years, and we have supported our clients with highly professional services in the sector of Trading, Manufacturing / Fabrication and Erection of Industrial, Commercial / Housing Projects.

Since 2000, **NAIBTECH** has experienced tremendous growth and diversification. Today we are capable to mobilizing a 200+ personnel work force for any prestigious **Industrial & Site Erection of Steel Pipe, Structural Hanger / Building / Shed, Pipe/Saddle Supports, Tanks / Vessels and its Saddles Foundations etc...** supply & manufacturing upon customer request for Electro Mechanical Products in huge quantity approved by SABIC & ARAMCO for any prestigious project, fabrication & site erection for any kind of steel shaped material in the sector of civil & electromechanical Construction, on-shore or off-shore, petrochemical process, refineries, power projects, water treatment plants, steel, cement, oil & gas and engineering construction companies and their industrial operation in the eastern province of Saudi Arabia.

Our mission is to continuously exceed the expectations of our customers by providing quality services through highly skilled and professional trading & contracting management teams, utilizing the state-of-the-art engineering and maintenance technology.

Combining these principles with our strong commitment to quality and customer satisfaction ensures that **NAIBTECH** will continue to be a leader in Industrial Projects for supplying of electro mechanical material, fabrication & construction contracting today and also in the future.

"Our aim is always to make an excellent commitment with 100% quality products and services for your assurance."

Board of Directors
NAIBTECH Group

شركة نيب تيك للخدمات الصناعية ش.م.و Naibtech Industrial Services Company S.P.C

Fabrication, Offshore Contracting / EPC, Expert in welding of High Pressure Alloys SS, CS
Plant, Boiler & Tanks with Fabrication and Erection of Industrial & Housing Building Project



Expert in Welding of High Pressure Alloys SS, CS Plant, Boiler & Tanks Piping with Fabrication and Erection of Industrial & Housing Building Projects.

COMPANY INTRODUCTION

شركة نيب تيك للخدمات الصناعية ش.م.و Naibtech Industrial Services Company S.P.C

Fabrication, Offshore Contracting / EPC, Expert in welding of High Pressure Alloys SS, CS Plant, Boiler & Tanks with Fabrication and Erection of Industrial & Housing Building Project



Expert in Welding of High Pressure Alloys SS, CS Plant, Boiler & Tanks Piping with Fabrication and Erection of Industrial & Housing Building Projects.

COMPANY INTRODUCTION

NAIBTECH Group for Trading&Gen. Cont.is one of the experienced professional Contracting & Trading company with diverse experience in all types of Industrial and Construction in Civil, Electrical, and Mechanical work,**Especially for supplying of industrial materials or manufacturing of auto and machinery parts for industrial projects** such as Pipes & Fittings, Valves, Flanges, Structural Steel Multi Shaped Sections, Grating/Covers, Industrial Equipments (Tanks / Vessels) serving to various petrochemical process, refineries, power projects, water treatment plants, steel, cement, oil & gas and engineering construction companies and their industrial operation through its main office in Dammam, Kingdom of Saudi Arabia & ALBA Area - Bahrain.



NAIBTECH Group was formed with a commitment to provide "Better than the Best" products and services in the specialized field. Our major focus is to supply various Fabricated & General Materials but not limited to below items...

General Construction of Commercial & Civil Buildings, Fabrication & Erection for all kind of Electro- Mechanical Construction and Industrial Sectors thru subsidiary branch of "NATIONAL INDUSTRIAL STEEL SOURCES EST. for Gen. Contracting. Dammam, Saudi Arabia.

- **Industrial Pipes (Carbon Steel, Stainless Steel & Steel Alloys)**
- **Pipes Fittings (SS, CS, MS, FCS, & FSS)**
- **Flanges & Valves (CS, SS, Bronze etc...)**
- **Structural Steel (SS, CS, Ms)**

شركة نيب تيك للخدمات الصناعية ش.م.و Naibtech Industrial Services Company S.P.C

Fabrication, Offshore Contracting / EPC, Expert in welding of High Pressure Alloys SS, CS
Plant, Boiler & Tanks with Fabrication and Erection of Industrial & Housing Building Project



Expert in Welding of High Pressure Alloys SS, CS Plant, Boiler & Tanks Piping with Fabrication and Erection of Industrial & Housing Building Projects.

Our products & services are mainly used in the following sectors.

- ❑ **Oil & Gas Industry**
- ❑ **Industrial Plants**
- ❑ **Petrochemical Plants**
- ❑ **On Land Construction**

We supply various products of several market leaders and well-known manufacturers around the world, where the quality is rigidly controlled in accordance with all applicable codes and standards. We strictly abide by the quality with utmost efforts in order to meet various customers' requirements and specifications. Providing quality products, reasonable prices and satisfactory services, the company has been favored and supported by lots of customers, and hence, has good reputation in the Bahrain and Saudi market.

NAIBTECH Group. forGen. Cont.&Trading has always accepted the fact that the customer is at the top. Everything we do is geared to meet "total and complete" customers acceptance. With this in mind, we are continuously in a state to develop, improve and share our knowledge and resources to meet the ever-changing needs and demands in this challenging industrial scenario.

We believed in maintaining a workforce of qualified individuals who match the stringent work culture required to meet standards higher than those set by the industry. At this end, **NAIBTECH Group** has qualified and experienced engineering teams and other necessary backup crews.

We also assure you that any enquiry or project entrusted to us will be professionally handled to the satisfaction of the clients for continued patronage in the years to come. We always take it as our own task to support the local & foreign industry. Although based in local market, we keep the international market in our view and we warmly welcome current and prospect customers to contact us for their various requirements.

For any further clarification & detail on our "C.P.", please feel free and don't hesitate to contact the undersigned. **Mobile No.+966 54 635 4122 / 00973 33220131 / 36178111.**

Muhammad Saleem Mughal
Managing Director - CEO

Bahrain Office Company:
NAIBTECH Industrial Services Co. SPC
LHASSAY (948), Kingdom of Bahrain

شركة نيب تيك للخدمات الصناعية ش.م.و
Naibtech Industrial Services Company S.P.C

Fabrication, Offshore Contracting / EPC, Expert in welding of High Pressure Alloys SS, CS
Plant, Boiler & Tanks with Fabrication and Erection of Industrial & Housing Building Project



Expert in Welding of High Pressure Alloys SS, CS Plant, Boiler & Tanks Piping with Fabrication and Erection of Industrial & Housing Building Projects.

**FABRICATION
&
CONTRACTING
DIVISION**

شركة نيب تيك للخدمات الصناعية ش.م.و Naibtech Industrial Services Company S.P.C

Fabrication, Offshore Contracting / EPC, Expert in welding of High Pressure Alloys SS, CS Plant, Boiler & Tanks with Fabrication and Erection of Industrial & Housing Building Project



Expert in Welding of High Pressure Alloys SS, CS Plant, Boiler & Tanks Piping with Fabrication and Erection of Industrial & Housing Building Projects.

FABRICATION Division – Supply and Installation:

- **Designing and Drafting of Industrial projects in Structural Steel, CS, SS, Piping and Tanks / Vessels etc...**
- **Fabrication of Structural Steel Buildings Components like Platforms, Handrails, Ladders/ Staircases, Hangers, and Sheds etc...**
- **Fabrication of Carbon/ Stainless Steel Vents & Vent Stacks, Piping including Pipe Supports Saddles and other Mechanical Equipments & Components for all kind of Industrial Projects like Tanks/ Vessels (up to 25mm shell thickness), Pumps, Boliers and Air Producing Equipments...**
- **Fabrication and Installation of high pressure fire fighting pipe lines and water sprinkler systems and irrigation systems on fire fighting supply system**
- **Fabrication & Installation of Gas, Air, Sweet/Raw Water & Sewerage Pipelines**
- **Supply and Installation of Structural Buildings Components and Mechanical Equipments & Components**
- **Industrial Maintenance including light and heavy equipments and Construction**
- **Sandblasting and Painting of Equipments and Structural Steels**
- **Manpower Supply and Equipment rental services**



CONTRACTING DIVISION:

1.1 Civil

Civil construction work includes but is not limited to industrial earthwork projects, site grading and site roads in industrial area etc. All these projects involve heavy hauling of fill materials, riprap placement, grading, compaction and asphaltting.

Civil Construction work further includes all types of buildings in traditional and/or concrete execution, renovation of buildings in all varieties, pipe trenches, cable trenches, industrial safety guards, industrial concrete structural works, equipment foundations, piping supports (sleeper) demolition of concrete and steel structures and installation of perimeter security fences.

1.2. Electrical

Electrical construction work consists of all electrical switchgears, ups, cable wiring, overhead and underground distribution systems up to Low Voltages, including laying, termination and connection of cable and installation of poles, transformers, distribution cabinets meters and substation rooms etc...

1- PERSONNEL SUPPORT SERVICES:-

2.1 Manpower Sourcing Division

Besides being a contracting company, we do supply engineering, technical and personnel manpower to ARAMCO, SABIC & its Affiliate Companies, Saudi Electricity Company, different National and Multinational Companies. We have also been participants of innumerable turnaround jobs of SABIC Companies but indirectly.

2.2 Selection of Technicians / Crafts

Selection of technical staff depends upon project requirements. Those project details are fed to the Personnel Manager who by then becomes aware of the job parameters required.

On receipt of the details, the Personnel Manager shall check the status of the current employees and their qualifications and experiences that are tallying with client's specific requirements.

Once the Personnel Manager has felt the need for more technical manpower for that particular Project, he then brings up the matter to the higher-ups in the Company.

شركة نيب تيك للخدمات الصناعية ش.م.و Naibtech Industrial Services Company S.P.C

Fabrication, Offshore Contracting / EPC, Expert in welding of High Pressure Alloys SS, CS
Plant, Boiler & Tanks with Fabrication and Erection of Industrial & Housing Building Project



Expert in Welding of High Pressure Alloys SS, CS Plant, Boiler & Tanks Piping with Fabrication and Erection of Industrial & Housing Building Projects.

2.3 Requirement of Additional Manpower & Equipment

There have been occasions that project requirement exceeds the personnel & equipment available in the Company. We then move enquiries to our regular sub-contractors to procure manpower & equipment to cater our needs.

3. MOBILIZATION:-

Once contracts signed with the client, the manpower, material & equipment will be mobilized to the site in coordination with the client according to schedule. Site engineers / supervisor will be assigned to perform the different task as per Construction Manager. Special representatives, as the need may arise, is posted in consultation with the client so as to liaise between the company and the client to look after the day-to-day affairs, such as, compliance to job specifications, safety rules and regulations.

4- TURNKEY PROJECT:-

After in-depth study of the Scope of Work, Business Dev. Manager will arrange appointment with client for proposed work site inspection; discuss exact work scope, nature and schedules. He then passes on the relevant portions to Quantity Surveyors and engineers to work out the cost, equipment and manpower. He consults the Personnel Manager towards requirements of manpower from within the company payroll and contractors. A comprehensive proposal is prepared and submitted to the client within the bid due date. Once the client accepts the proposal, Company will open a Site Office at the location allotted, and mobilize men and material for effective project implementation.

5- WARRANTY:-

NAIBTECH shall shoulder the responsibility of Total Quality Management of the work thus performed by them, and provide warranty for a limited time.

6- SPECIALIZED DISCIPLINES:-

Manufacturing of LPG Cylinders, For Domestic & Commercial Consumers

شركة نيب تيك للخدمات الصناعية ش.م.و Naibtech Industrial Services Company S.P.C

Fabrication, Offshore Contracting / EPC, Expert in welding of High Pressure Alloys SS, CS Plant, Boiler & Tanks with Fabrication and Erection of Industrial & Housing Building Project



Expert in Welding of High Pressure Alloys SS, CS Plant, Boiler & Tanks Piping with Fabrication and Erection of Industrial & Housing Building Projects.

We have the experience and resources to address the shutdown requirements of schedule urgency, quality and safety. We have completed, from 1995 to 2006 over SAR 116.32 million of work in a totally satisfactory manner by its principal company in Pakistan.

During the development and manufacturing of various types of store, both for Industrial and Commercial use, we have been able to develop the wide and diversified technological base within our different industrial units and these are always ready and available for under taking challenging assignments as per the requirements of our valued customers. Some of the technologies available with us are:-

- a. Computer aided design
- b. Machining & Grinding
- c. Tool design and manufacturing
- d. Aluminum welding and machining
- e. Heat treatment
- f. Casting and Forging
- g. Jigs, Fixture and Gauges design and manufacture

The company has the most modern in-house test facilities and laboratories that enable us to maintain high standards of quality and reliability. Some of the test facilities available with us mentioned below:-

- a. Hardness testing
- b. Rubber hardness testing
- c. Calibration Systems

We are following the total quality management system and presently are in the process of orientation of our procedures as per the principles of ISO-9001 & 2000. We have been registered with Pakistan Chamber of Commerce and International quality standard companies as Industrial Parts and Equipments Manufacturer.

7- SHUTDOWNS:-

NAIBTECH has within its senior management many years of experience covering oil, and petrochemical plant shutdowns; we are currently at a stage of to supply a skilled or non skilled manpower to complete the major shutdown jobs only.

شركة نيب تيك للخدمات الصناعية ش.م.و Naibtech Industrial Services Company S.P.C

Fabrication, Offshore Contracting / EPC, Expert in welding of High Pressure Alloys SS, CS Plant, Boiler & Tanks with Fabrication and Erection of Industrial & Housing Building Project



Expert in Welding of High Pressure Alloys SS, CS Plant, Boiler & Tanks Piping with Fabrication and Erection of Industrial & Housing Building Projects.

8- CORROSION CONTROL WORKS:-

- Granite Blasting
- Painting System

Within the wide spectrum of anti-corrosion technology, **NAIBTECH** has dedicated resources also towards the following areas:-

- Grit and high pressure water surface preparation, for both concrete and steel.
- Application of specialized industrial coating including polymer modified cementations cutting, Epoxy coating and Urethanes.
- Concrete repair and conventional removal methods, Core Drilling from 1" to 7" dia. by 50cm lg. drilling bit and above dia. Hole shall be drilled through our own technology. The management also has considerable experience of major earth stabilization using shot Crete.

9- Engineering & Technical Services (Our range of services includes)

As **NAIBTECH**, we revel in the challenge of meeting and exceeding your engineering needs. As a leader in the design and implementation of industrial process control systems, our solutions address your short and long-term requirements, enabling you to gain and hold the competitive advantage well into the future.

- Projects Design and Development
- Industrial and Erection / Installation
- Third-Party Inspection / Expediting
- Equipment Failure Analysis / Maintenance
- Machining (Tools & Die) and Commissioning
- Equipment Maintenance
- Emergency Repairs / Refurbishment

شركة نيب تيك للخدمات الصناعية ش.م.و
Naibtech Industrial Services Company S.P.C

Fabrication, Offshore Contracting / EPC, Expert in welding of High Pressure Alloys SS, CS
Plant, Boiler & Tanks with Fabrication and Erection of Industrial & Housing Building Project

Expert in Welding of High Pressure Alloys SS, CS Plant, Boiler & Tanks Piping with Fabrication and Erection of Industrial & Housing Building Projects.



**TRADING
DIVISION**
(PRODUCTS LIST)

شركة نايب تيك للخدمات الصناعية ش.م.و Naibtech Industrial Services Company S.P.C

Fabrication, Offshore Contracting / EPC, Expert in welding of High Pressure Alloys SS, CS Plant, Boiler & Tanks with Fabrication and Erection of Industrial & Housing Building Project

Expert in Welding of High Pressure Alloys SS, CS Plant, Boiler & Tanks Piping with Fabrication and Erection of Industrial & Housing Building Projects.

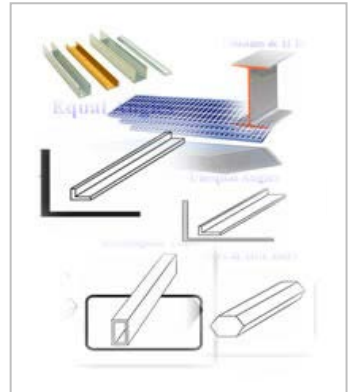


TRADING DIVISION:

We Stock, Service & Supply the following industrial products;

MECHANICAL PRODUCTS

- **Industrial Pipes**(ERW & SMLS): of CS, SS & Alloy Metals, all sizes.
- **Pipe Fittings** of CS, SS, FCS, FSS & Alloy Metals, all sizes.
- **Flanges**: Slip-On, Weld-Neck, Threaded, Blind, Socket Weld in Different Classes.
- **Strainers**: Y-strainers, Pressure gauges.
- **Gratings**: Plain and Serrated, Black and Galvanized.
- **Timber, Steel & Aluminum** Structural Hollow Sections, Angles,
- Steel Rebar's, Universal Beams, Channels, Flat Bars, Square, Round Bars...
- **Plain Sheets**: Timber, Aluminum, SS Sheets & MS Plates.
- **Fasteners (Bolts, Nuts & Washers etc...)** for all types & sizes.



INSTRUMENTATION PRODUCTS

- **Compression Tubes & Fittings (All Types of USA Brands)**
- **Thermocouples, (ALL TYPES)**
- **Thermo wells, * RTD PT-100,**
- **High Temp'r. Instr'n. & Control Cables**
- **Temperature Controllers**
- **Temperature Indicators**
- **Level Switches, Level Controls, Flow Meters**
- **SS Inst Tags & Engraving**
- **Explosion Proof Junction Boxes, (Appleton)**
- **SS, Inconel & Monel Tubes, Pipes and Fitting**



شركة نايب تيك للخدمات الصناعية ش.م.و Naibtech Industrial Services Company S.P.C

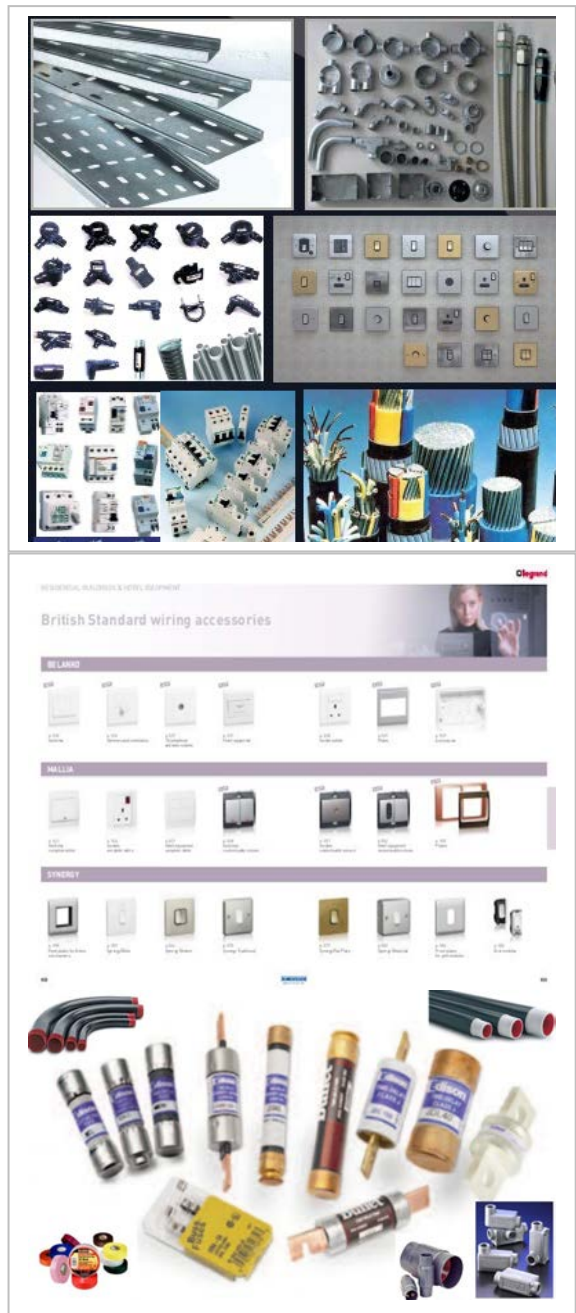
Fabrication, Offshore Contracting / EPC, Expert in welding of High Pressure Alloys SS, CS Plant, Boiler & Tanks with Fabrication and Erection of Industrial & Housing Building Project

Expert in Welding of High Pressure Alloys SS, CS Plant, Boiler & Tanks Piping with Fabrication and Erection of Industrial & Housing Building Projects.



ELECTRICAL PRODUCTS

1. **WIRES AND CABLES**
2. **CONDUITS, FITTINGS AND ACCESSORIES**
3. **BOXES, ENCLOSURES, CABINETS AND ACCESSORIES**
4. **HAZARDOUS AREA AND HEAVY DUTY FITTINGS AND EQUIPMENT**
5. **CABLE TRUNKING, CABLE DUCTS AND ACCESSORIES**
6. **CABLE TRAYS, CABLE LADDERS AND ACCESSORIES**
7. **CHANNELS AND ACCESSORIES**
8. **FLOOR TRUNKING AND ACCESSORIES**
9. **BUSWAY**
10. **BEDHEAD AND NURSE CALL EQUIPMENT**
11. **WIRE AND CABLE ACCESSORIES**
12. **EARTHING ACCESSORIES AND BUSBARS**
13. **CHEMICALS, TAPES AND SPLICING EQUIPMENT**
14. **WIRING DEVICES AND ACCESSORIES**
15. **INDUSTRIAL PLUGS AND SOCKETS**
16. **FUSES AND ACCESSORIES**
17. **SAFETY SWITCHES**
18. **PROTECTION AND DISTRIBUTION EQUIPMENT**
19. **CONTROL EQUIPMENT AND TIMERS**
20. **TRANSFORMERS AND VOLTAGE REGULATORS**
21. **MOTORS**
22. **ALARM AND SIGNAL EQUIPMENT**
23. **VDI AND TELECOMMUNICATION EQUIPMENT**
24. **AUTOMATION SYSTEMS**
25. **COOLING, HEATING AND VENTILATION EQUIP.**
26. **LIGHTING**
27. **LIGHTING AND FAN SPEED CONTROL**
28. **EMERGENCY LIGHTING**
29. **LAMPS, BALLASTS AND STARTERS**
30. **CHARGERS, BATTERIES AND FLASHLIGHTS**
31. **MEASUREMENT AND INSTRUMENTATION**
32. **POLE LINE EQUIPMENT**



شركة نيب تيك للخدمات الصناعية ش.م.و Naibtech Industrial Services Company S.P.C

Fabrication, Offshore Contracting / EPC, Expert in welding of High Pressure Alloys SS, CS
Plant, Boiler & Tanks with Fabrication and Erection of Industrial & Housing Building Project

Expert in Welding of High Pressure Alloys SS, CS Plant, Boiler & Tanks Piping with Fabrication and Erection of Industrial & Housing Building Projects.



AUTOMATION - CONTROL & SOLUTION SYSTEM

- I. Process control analysis and consultation.
- II. Automation design and development
- III. Data acquisition
- IV. Distributed control systems
- V. Combustion controls
- VI. Burner management systems
- VII. Control system for Power Generation.

We have been supplying & serving Instrument Products to the following Industries.

- **Petro -Chemical Industries**
- **Fertiliser**
- **Gas plants**
- **Chemical Industries**
- **Aluminium Smelters**
- **Aluminium Extrusion plants&Downstream Industries**
- **Cement Plants**
- **Glass Industries**
- **Food Industries**
- **Laboratories**
- **Steel Industries & Foundries**
- **Power Plants & Desalination plants**
- **Metal coating / Galvanizing Industries ... etc**

Services - Advantages to GCC Customers:-

- *Extensive stock of raw material for manufacturing of Thermocouples, RTDs, Pipes, Rods etc. We manufacture around 30,000 Thermocouples per year.*
Advantage: We offer very competitive price to Customers.
- *Against annual contract, we can manufacture & stock the products. These can be delivered periodically against customer call off.*
Advantage: Customer holds minimum inventory
- *Recycling of undamaged used parts such as Heads, Terminals, etc.*
Advantage: Cost reduction and saving for Customers.
- *Being a GCC local manufacturer, we can make faster delivery.*
Advantage: Customer's Emergency & Shutdown requirements fulfilment.
- *Neighbour to KSA*
- *Local Technical support by Available.*
Advantage: Technical personnel are available for site visits & discuss temperature measuring problems, new applications and improvement.

شركة نيب تيك للخدمات الصناعية ش.م.و
Naibtech Industrial Services Company S.P.C

Fabrication, Offshore Contracting / EPC, Expert in welding of High Pressure Alloys SS, CS
Plant, Boiler & Tanks with Fabrication and Erection of Industrial & Housing Building Project

Expert in Welding of High Pressure Alloys SS, CS Plant, Boiler & Tanks Piping with Fabrication and Erection of Industrial & Housing Building Projects.



**COMPANY
ORGANIZATION
CHART
(FACTORY)**

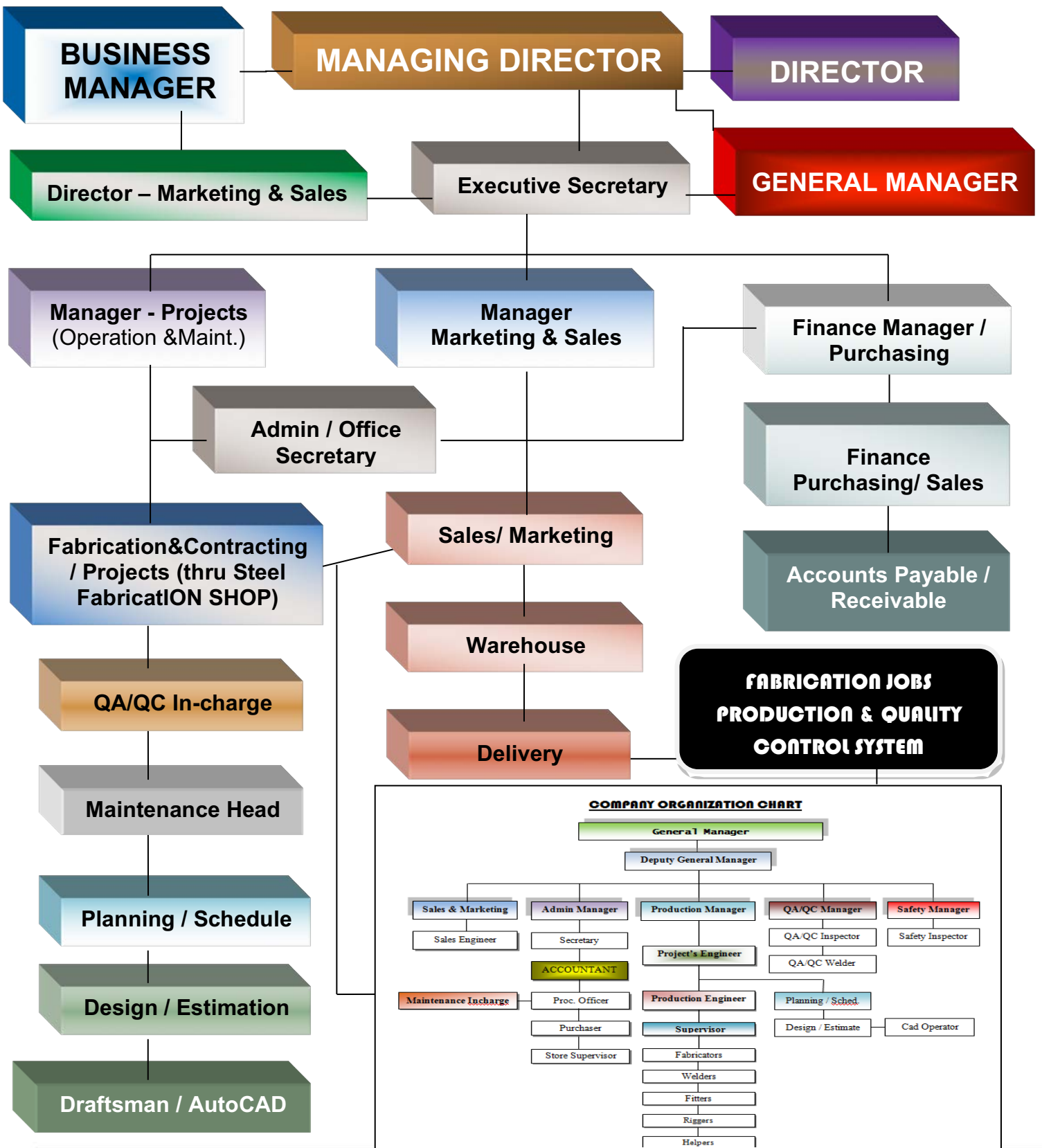
شركة نيب تيك للخدمات الصناعية ش.م.و Naibtech Industrial Services Company S.P.C

Fabrication, Offshore Contracting / EPC, Expert in welding of High Pressure Alloys SS, CS Plant, Boiler & Tanks with Fabrication and Erection of Industrial & Housing Building Project

Expert in Welding of High Pressure Alloys SS, CS Plant, Boiler & Tanks Piping with Fabrication and Erection of Industrial & Housing Building Projects.



COMPANY ORGANIZATION CHART



شركة نيب تيك للخدمات الصناعية ش.م.و
Naibtech Industrial Services Company S.P.C

Fabrication, Offshore Contracting / EPC, Expert in welding of High Pressure Alloys SS, CS
Plant, Boiler & Tanks with Fabrication and Erection of Industrial & Housing Building Project

Expert in Welding of High Pressure Alloys SS, CS Plant, Boiler & Tanks Piping with Fabrication and Erection of Industrial & Housing Building Projects.



**General
Menworkship
strength &
RESOURCES**

شركة نيب تيك للخدمات الصناعية ش.م.و
Naibtech Industrial Services Company S.P.C

Fabrication, Offshore Contracting / EPC, Expert in welding of High Pressure Alloys SS, CS Plant, Boiler & Tanks with Fabrication and Erection of Industrial & Housing Building Project

Expert in Welding of High Pressure Alloys SS, CS Plant, Boiler & Tanks Piping with Fabrication and Erection of Industrial & Housing Building Projects.



LIST OF MENPOWER - Strength

A. Management Staff

SL.#	DESCRIPTION	NATIONALITY	QTY.	EXPERIENCE
1	Managing Director - CEO (M)	Pakistani	1	20 Years
2	Director (M)	Pakistani	1	2 Years
3	Business Manager (F/M)	Filipino	1	25 Years
4	General Manager (F/M)	Pakistani	1	8 Years
5	Executive Secretary (F/M)	Filipino	1	7 Years
6	Sales & Marketing Manager	Pakistani	1	20 Years
7	Finance Manager (F/M)	Pakistani	1	12 Years
8	Procurement Manager	Pakistani	1	5 Years
9	HR / Personnel Manager	Filipino	1	8 Years
10	Technical & Comm. Manager	Indian	1	7 Years
11	Gov't Affairs Officer	Bahraini	1	5 Years

B. Technical Management Staff

1	Construction / Maint. Manager	Pakistani	1	10 Years
2	Engineering Manager	Indian	1	10 Years
3	Planning / Sched. Engineer	Pakistani	1	5 Years
4	Design & Estimate Engineer	Pakistani	1	6 Years
5	Cad Operator	Indian	2	7 Years
6	HRD Manager	Saudi	1	8 Years
7	HRD Coordinator	Indian	1	9 Years
8	Project's Engineer	Syrian	1	8 Years
9	Construction Coordinator	Indian	1	7 Years
10	Procurement Manager	Pilipino	1	5 Years
11	Procurement Officer	Indian	1	3 Years
12	Store Supervisor	Indian	2	2 Years
13	QA/QC Manager	Indian	1	9 Years
14	QA/QC Inspector	Pakistani	4	5 Years
15	Safety Manager	Filipino	1	8 Years
16	Safety Inspector	Indian	4	3 Years
17	Secretary	Indian	2	2 Years
18	Civil Engineer	Indian	2	7 Years
19	Mechanical Engineer	Indian	2	8 Years
20	Electrical Engineer	Pilipino	1	5 Years

شركة نيب تيك للخدمات الصناعية ش.م.و
Naibtech Industrial Services Company S.P.C

Fabrication, Offshore Contracting / EPC, Expert in welding of High Pressure Alloys SS, CS Plant, Boiler & Tanks with Fabrication and Erection of Industrial & Housing Building Project



Expert in Welding of High Pressure Alloys SS, CS Plant, Boiler & Tanks Piping with Fabrication and Erection of Industrial & Housing Building Projects.

C. Direct and Indirect Workmanship Force:-

Sr.#	Description / Title	Qty.
1	Foreman – Mechanical / Industrial	3
2	Steel Structure Welder (Tag)	15
3	Structure Fabricator	13
4	Pipe Fabricator	10
5	Pipe / Steel Supports Erector	9
6	Pipe / Structure Fitter	15
7	Certified Multi / Tig. Welder (GTAW / STAW)	16
8	6G Welder (SMAW)	8
9	3G WELDER (ARC / MIG)	11
10	Rigger Level III	8
11	Millwright	5
12	Painter / Spray Painter	9
13	Blaster	3
14	Scaffolder	6
15	Mechanical Helper	25
16	Foreman – Civil	2
17	Carpenter	10
18	Steel Fixer	10
19	Tile setter	7
20	Mason	10
21	Steel Building Erectors	5
22	Plumber	5
23	Labors	15
24	Foreman – Electrical	1
25	Building Electrician	3
26	Industrial Electrician	8
27	Helper Electrician	7
28	Cable Splicer	3
29	Instrument Technician	10
30	Heavy Duty Driver	2
31	Light Duty Driver	5
32	Equipment Driver	4
	Total;	263

شركة نيب تيك للخدمات الصناعية ش.م.و
Naibtech Industrial Services Company S.P.C

Fabrication, Offshore Contracting / EPC, Expert in welding of High Pressure Alloys SS, CS
Plant, Boiler & Tanks with Fabrication and Erection of Industrial & Housing Building Project

Expert in Welding of High Pressure Alloys SS, CS Plant, Boiler & Tanks Piping with Fabrication and Erection of Industrial & Housing Building Projects.



**General Assets
Tools & EQUIPMENT
RESOURCES**

شركة نيب تيك للخدمات الصناعية ش.م.و
Naibtech Industrial Services Company S.P.C

Fabrication, Offshore Contracting / EPC, Expert in welding of High Pressure Alloys SS, CS Plant, Boiler & Tanks with Fabrication and Erection of Industrial & Housing Building Project

Expert in Welding of High Pressure Alloys SS, CS Plant, Boiler & Tanks Piping with Fabrication and Erection of Industrial & Housing Building Projects.



LIST OF EQUIPMENTS

C. Indirect and some how Direct Equipment Force:-

Sr.#	Description / Title	Qty.
1	Over Head Crane 3 ~ 5 ton (Workshop)	1
2	AIR COMPRESSOR -P250WD&P375WD	2
3	Universal & Magnetic Drilling Machine (Big)	2+2
4	ARC WELDING MACHINE – Generator type & Electric	2+6
5	Tig Set w/ ArgunCylinders Set	6+12
6	Mig Welding Machine w/ Co2 Cylinders	4+9
7	Cutting (sharing) Machine up to 15 mm plate cutting	1
8	Auto Cutting Machine (Revolving type)	2
9	Cutting Torches w/ Cylinder (Ethylene & oxygen) Set	3+12
10	Generator 500 KVA	1
11	Lathe Machine up to 3 meter dia. capacity	1
12	Milling Machine vertical and horizontal	1
13	Rolling Machine up to 16 mm thk. Plate rolling	1
14	Shearing / Cutting Machine upto 16 mm thk. Plate	1
15	Sand Blasting Machine w/ Tools / Accessories	1+1 set
16	CAR CAMRY – 2008 (GLX – Executive)	2
17	CAR TOYOTA COROLA – 2005 XLI	5
18	SMALL TRUCK (DYANA)	2
19	SINGLE CABIN PICKUP	3
20	DOUBLE CABIN PICKUP	2
21	CAR CHEVROLET	1
23	SMALL BUS 15 SEAT	1
24	TAHOE – GM Motor	1
25	FORKLIFT - TOYOTA	1
26	PLATE COMPACTOR	2
27	VIBRATOR CONCRETE	1
28	CONCRETE MIXER (STONE MORTAR) MACHINE	1
29	BACKHOE -CATERPILLAR	1
30	ASPHALT CUTTER	1
31	BOB CAT 743 -B	1
32	CNC Crossbow Cutoff Machine	1
33	ARC Welder Universal 330 + TH, 400W	1
32	BUS -GMC -45 SEAT	1

شركة نيب تيك للخدمات الصناعية ش.م.و
Naibtech Industrial Services Company S.P.C

Fabrication, Offshore Contracting / EPC, Expert in welding of High Pressure Alloys SS, CS
Plant, Boiler & Tanks with Fabrication and Erection of Industrial & Housing Building Project



Expert in Welding of High Pressure Alloys SS, CS Plant, Boiler & Tanks Piping with Fabrication and Erection of Industrial & Housing Building Projects.

33	CAR -HYUNDAI ELANTRA	1
34	CAR Toyota Fortuner 2008	1
35	CAR – Hyundai Accent	1
36	NISSAN – Pick Up	2
37	CAR MG RX5 – Model 2020	1
38	CAR –BMW RX5 - 2019	1

**SUMMARY OF
EXECUTED
PROJECTS
(G.C.C.)**

شركة نيب تيك للخدمات الصناعية ش.م.و Naibtech Industrial Services Company S.P.C

Fabrication, Offshore Contracting / EPC, Expert in welding of High Pressure Alloys SS, CS Plant, Boiler & Tanks with Fabrication and Erection of Industrial & Housing Building Project



Expert in Welding of High Pressure Alloys SS, CS Plant, Boiler & Tanks Piping with Fabrication and Erection of Industrial & Housing Building Projects.

Summary of Completed Civil Construction Projects

S/No.	Description of Project	Client & Location	Value of Project
1.	Civil Construction of 150 Villas	KEMEEYA HOUSING – Jubail SABIC	SR / 9.80 M
2.	Execution of SPC Buildings	SAMSUNG/Saudi Petrochemical - Jbl.	SR / 3.68 M
3.	Renovation of IBNESINA Buildings	IBNESINA – Jubail SABIC	SR / 0.65 M
4.	Supply & Installation of temporary fencing work with foundations.	UNILUBE – Jubail Industries	SR / 0.20 M
5.	Construction of Sceco Transformer Foundations & Execution of Cable laying.	NAIBTECHC GAS-Jubail SABIC	SR / 0.38 M
6.	Renovation of Admin Building, Walkways, Smoking Shelter.	NAIBTECHC GAS-Jubail SABIC	SR / 1.35 M
7.	Civil Works for 7 nos.R.C. Schools	ROYAL COMMISSION – Jubail	SR / 4.95 M
8.	Construction of Villas under khonaini	Royal Commission Jubail	SR / 3.45 M
9.	Construction of Production Hall	M. K. CABLE – R. C. Jubail	SR / 1.15 M
10.	Fabr'n/Construction of Ware House	SAUDI EGGA – R. C. Jubail	SR / 1.45 M
11.	Construction of concrete platform for heavy machines / equipments.	SAUDI EGGA – Jubail	SR / 3.45 M
12.	Civil & Mechanical work installation of pre cast/kurb stones, flood lights.	SAUDI WILLICH – R. C. Jubail	SR / 2.34 M
13.	Pre cast pump house Installation	METE – R. C. Jubail	SR / 1.23 M
14.	Provision of two portable units at PK during VCM shutdown	WBS EST – R. C. Jubail	SR / 0.24 M
15.	Construction of Maintenance Facilities	SAUDI WILLICH – Jubail	SR / 0.35 M
16.	Construction of Walkway	SAUDI VOIST ALPINE – Jubail	SR / 0.23 M
17.	Construction of Sceco Substation	SCECO-Qateef	SR / 3.93 M
18.	Industrial Material Supply	NAVEL BASE-Jubail	SR / 1.50 M
19.	Deisel Generator Power Supply Cabling and hookup system	FMC – Khubar	SR / 1.13 M
20.	Repairing of Loading Platform 1 &2	SODA-Jubail	SR / 0.23 M
21.	Construction of SWCC Housing Villas	AZIZYA - Khobar	SR / 4.56 M
22.	Execution of EPCCO Housing MEP	EPCCO-Khursaniay	SR / 1.21 M
23.	Installation of Ceramic Tiles-Renovation	TAMIMI TAFGA-Jubail	SR / 0.34 M
24.	Fabrication & Erection of pipe lines.	TAMIMI Construction – Dammam II	SR / 0.91 M
25.	Renovation of Saudi Tourist & Travel Bureau Building	SAUDI AIR LINE-Jubail	SR / 2.34 M
26.	Renovation of Office and Warehouse / Store Buildings	Abdullah Hashim Industrial Gases &Equipment Co. Ltd.-Jubail	SR / 2.43 M
27.	Drainage line from HRSG to drain pit at PP-9 project Riyadh	DEKOMTE / RAYTHEON – Riyadh	SR / 4.32 M

شركة نيب تيك للخدمات الصناعية ش.م.و Naibtech Industrial Services Company S.P.C

Fabrication, Offshore Contracting / EPC, Expert in welding of High Pressure Alloys SS, CS Plant, Boiler & Tanks with Fabrication and Erection of Industrial & Housing Building Project

Expert in Welding of High Pressure Alloys SS, CS Plant, Boiler & Tanks Piping with Fabrication and Erection of Industrial & Housing Building Projects.



Executed Electro-Mechanical Projects in K.S.A.

S/No.	Description of Project	Client & Location	Year	Value of Project
1.	Fabrication of Cooling Tower and Reminerlization Plant 's Steel Structure Works Silos, 3 Sedimentation and 3 Used backwash tanks, sludge handling system and their pumping station along with FRP pipelines installations with Pipe Supports.	Moh'd Abdulmohsin Kharafi Sons Co. Riyadh - KSA 74.6 MIGD Jubail Product Water Expansion Project, SWCC – Jubail.	2003 to 2004 (partially)	2.500 million
2.	Construction of Private Buildings complete with finnshing stones installation for 15,00 sm ² areas	Mohd. Hussain Al-Orainey Est. – Khobar	2003 To 2005	1.750 million
3.	Design, Fabrication and site erection of steel structural sheds, tanks, vessels, foundations for their equipments and maintenance projects.	United Lube Oil Company (Pvt.) Ltd. – Ind. City Jubail Saudi Arabia. (frequently awarded)	2003 To 2005 (partially)	0.542 million
4.	Fabrication & Erection of piping & equipments with saddle supports at site.	TAYF – INDUSTRIAL CITY JUBAIL. Registered as sub contractors	2005 To 2005	0.250 million
5.	Fabrication and Installation of high pressure Fire Fighting pipe lines about 6200 dia inch.	DLPS – Abqaiq / Jubail, Client for SWCC – Jubail	2005 To 2005	1.550 million
6.	Fabrication of Grating, Hand rails, ladder and cages of Equipments and chemical storage tanks.	Gulf Steel Works – Jubail	2005 To 2005	1.500 million
7.	Fabrication and Installation of Exhaust Fume System including duct work w/ supports.	TAYF – INDUSTRIAL CITY JUBAIL	2006 To 2006	0.155 million
8.	Fabrication of S.S. Vessels about 50 ton for Instrumentation Air sytem.			
9.	Fabrication and Erection of 2" dia. C.S. pipe lines for asphaltting on pipe rack permanent and temporary tie-in connection in emergency shutdown About 1500 dia. Inch	United Lube Oil Company (Pvt.) Ltd. – Ind. City Jubail Saudi Arabia.	2006 To 2007	0.750 million
10.	Fabrication of high pressure vessel 120 ton for Sulfer converter for khursaniyah	INMA Steel Industry – Jubail through Zain Steel Industry.	2006 To 2007	1.253 million
12.	Civil Work for concrete structure and block w/ painting.	AZMEEL Contr. & Const. Co. – Jubail	2006 – 2006	0.255 Million

شركة نيب تيك للخدمات الصناعية ش.م.و Naibtech Industrial Services Company S.P.C

Fabrication, Offshore Contracting / EPC, Expert in welding of High Pressure Alloys SS, CS Plant, Boiler & Tanks with Fabrication and Erection of Industrial & Housing Building Project



Expert in Welding of High Pressure Alloys SS, CS Plant, Boiler & Tanks Piping with Fabrication and Erection of Industrial & Housing Building Projects.

S/No.	Description of Project	Client & Location	Year	Value of Project
13.	Fabrication of Platforms, Steel Structure Buildings and Pipe Racks with supporting beams & accessories 190 Ton	AK Group – Jubail for Qatar Project	2005 To 2006	1.565 million
14.	Fabrication, Blasting and painting of Steel structural posts having 2000 ton load capacity. depending on EA 25 ton appx.	ART Industrial Supports Services – Jubail for HADEED	2006 To 2006	1.450 million
15.	Pipe and Saddle Supports 75 Ton for Desalination Plant – Mitsubish and Safco Shut Down Projects	Al- Gaswa Supports Pvt. Ltd.(GSCO – Jubail) for Mitsubishi Projects.	2007 To 2007	1.100 million
17.	Fabrication and Erection of 15mm upto 125mm dia. S.S. & C.S. pipe lines for steel forging machinery tie-in connection in production area about 2500 dia. Inch.	Kalma Cont. Est. – Jubail for United Gulf Steel Industry Pvt. Ltd.	2007 To 2007	0.453 million
18.	Construction of Private Buildings complete with finishing for 25,00 sm ² areas.	Al Mubaraz Cont. Co. – Al Ahsa Near Rashid Mall	2006 To 2007	0.653 Million
19.	Supply & Fabrication of Steel Structural Building and S. S. and C. S. Piping about 5500 Dia Inch for Hassad / JANA Project	Technical Sources for JANA Epoxy Plant –Jubail	2007 To continue	1.467 million
20	Civil Work for Suwaidi Camp 1 fnshing (Tile & Plastering Work) and Internal/External painting.	Al-Zahrani Trad. & Cont. Co. - Dammam	2007 to 2007	0.350 million
21	Supply & Fabrication of Steel Structures & Embedments/ Templates & Base Plates for Huyndai – Marafiq Project	Al- Gaswa Supports Pvt. Ltd.(GSCO – Jubail) for Mitsubishi Projects.	2007 To 2008	0.860 Million
22	Fabrication & Installation of Thermowall C.S. & S.S. Pipe Line about 3000 Dia Inch.	Gulf packaging Industries Ltd. Co. Jubail Ind. City	2007 To 2007	0.825 Million
23	Supply & Fabrication of S.S. Ducts for Bruckner Machine 's Fume Exhausting System	Gulf packaging Industries Ltd. Co. Jubail Ind. City	2007 To 2007	0.425 Million
24	Supply & Fabrication of Stainless Steel 316L & C.S. Embedments, Templates, Structural Supports & Embedment Items for R.C. Industrial Facilities Projects.	AL-HARBI Trading & Contracting Company Riyadh – Jubail R.C. Projects.	2007 To 2008	1.500 Million
25	Supply and Fabrication of Marafiq Tanks PlatForms, Structure, Handrails, Ladders and Site Facilities Steel Goods.	DONG SUNG Saudia Al-Khobar – Jubail Hyundai – Marafiq Project	2007 To 2008	1.900 Million
26	Fabrication of Equipments Platforms, Structure, Handrails & Ladders etc...	SAUDI PAN GULF Jubail – SABIC	2007 To 2008	0.800 Million

شركة نيب تيك للخدمات الصناعية ش.م.س.و Naibtech Industrial Services Company S.P.C

Fabrication, Offshore Contracting / EPC, Expert in welding of High Pressure Alloys SS, CS Plant, Boiler & Tanks with Fabrication and Erection of Industrial & Housing Building Project



Expert in Welding of High Pressure Alloys SS, CS Plant, Boiler & Tanks Piping with Fabrication and Erection of Industrial & Housing Building Projects.

S/No.	Description of Project	Client & Location	Year	Value of Project
27	Fabrication of Aramco/Sabic Equipments Platform, Handrails, Ladders & Accessories	MISA – Marintime Industrial Services Arabia Co. Ltd.-Jubail	4/2008 - 5/2008	38,500 SAR
28	Supply & Fabrication of SS-316L Drip Trays for Battery Equipment	Saudi Binladin Group – Sharq 3 rd Project	4/2008 - 5/2008	24,960 SAR
29	66” Dia Mitered Elbow with 3 M Pipe in Gr. 70, 100% NDT	Fluor Canada Ltd. – SipchemJac Project	4/2008 - 5/2008	94,800 SAR
30	Supply, Fabrication & Installation of Platform for Maintenance Work 5 Units upto 48 Floors	Al-SuwaiketTrand. & Cont. Co. – Khobar at DEHRAN TOWER	5/2008 To continue	333,450 SAR
31	Supply, Fabrication & Installation of Steel Supports for ELEVATOR upto 48 Floors	Al-SuwaiketTrand. & Cont. Co. – Khobar at DEHRAN TOWER	5/2008 - 6/2008	75,600 SAR
32	Supply, Fabrication & Installation of 2 nos. Emergency Stair case Haindrails upto 48 Floors	Al-SuwaiketTrand. & Cont. Co. – Khobar at DEHRAN TOWER	5/2008 – 7/2008	208,000 SAR
33	Supply, Fabrication & Installation of Emergency Platform, Stair case Haindrails upto 4 Floors	Al-SuwaiketTrand. & Cont. Co. – Khobar at Euro Village Office Building # 01 - KENT	7/2008 – 8/2008	37,263 SAR
34	Supply, Fabrication & Installation of Platform for Maintenance Work 01 Unit upto 48 Floors	Al-SuwaiketTrand. & Cont. Co. – Khobar at DEHRAN TOWER	11/2008 To continue	94,770 SAR
35	Design, Fabrication, Painting (Chemical Resistance) & Supply of CS Tank for SNF Storage 80m ³ , API 650, Ø4.5 X 5.2 M Ht.	SFCCL-CHEMANOL Methanol Chemicals Company – Jubail	6/2008 – 7/2008	97,000 SAR
36	Repair of AIR PLENUM Equipment C.S. 4 M x8 M x 4 M	Fluor Canada Ltd. – SipchemJac Project	6/2008 - 6/2008	22,000 SAR
37	Design, Supply, Fabrication & Erection of Roof Deck Framing Shed for Multi Purpose Hall Construction Project. 800 m ²	Abdul RahmanHejazi Cont. Est. through main contractor Al-NABA / Hadeed	4/2008 – 8/2008	184,500 SAR
38	66” Dia Pipe x .375 mm Wall Thk. in Gr. 70, 100% NDT	Fluor Canada Ltd. – SipchemJac Project	6/2008 - 6/2008	21,500 SAR
39	Fabrication, Paint of CS – Gr. 70 & SS-316L VENT STACKS without material – 3 Nos. 48” Dia ~ 24” Dia x 61 Mtr. Ht.	Fluor Canada Ltd. – SipchemJac Project	7/2008 - 10/2008	824,900 SAR
40	Hydro Testing of Vent Stacks @ 3.5 Bar but tested actually 6 bar	Fluor Canada Ltd. – SipchemJac Project	7/2008 - 10/2008	190,100 SAR
41	Fabrication of 20” Dia Pipe x .375 Wall Thk, SS-316L without material on NDT 100%	Fluor Canada Ltd. – SipchemJac Project	7/2008 - 11/2008	216,000 SAR
42	Supply & Fabrication of Vortex Reducers – 3 nos. 1220x600x5 mm T.	SFCCL-CHEMANOL Methanol Chemicals Company – Jubail	9/2008 – 9/2008	4,600 SAR

شركة نيب تيك للخدمات الصناعية ش.م.و Naibtech Industrial Services Company S.P.C

Fabrication, Offshore Contracting / EPC, Expert in welding of High Pressure Alloys SS, CS Plant, Boiler & Tanks with Fabrication and Erection of Industrial & Housing Building Project



Expert in Welding of High Pressure Alloys SS, CS Plant, Boiler & Tanks Piping with Fabrication and Erection of Industrial & Housing Building Projects.

S/No.	Description of Project	Client & Location	Year	Value of Project
43	Supply, Fabrication, Painting & Erection of Steel Structure Shed 700m ² for Private Saudi Owner in Light Industrial Area - Jubail	Mulaq Abdul Rahman Al-Otaibi – Saudi Work Shop Owner	9/2008 – 12/2008	128,000 SAR
44	Supply, Fabrication, Painting & Installation of Fire Fighting Water Service Piping and Pump PIT& LPG GAS Piping for Office/ Factory	Energy Engineering Services – VESSEL HEAD Factory Jubail	11/2008 – to 01/2009	136,130 SAR
45	Supply, Fabrication & Installation of Platform for Maintenance Work 02 Unit upto 48 Floors and Emergency Platform, Stair case Handrails upto 4 Floors	Al-SuwaiketTrand. & Cont. Co. – Khobar at DEHRAN TOWER / Euro Village Office Building # 02 - KENT	01/2009 To 12/2009	95,150
46	Fabrication & Installation of LPG Piping & Equipments for Saudi paper Mills Dammam II Ind. City	Industrial Energy Services for LPG Systems - Dammam	2/2009 – 2/2009	83,285 SAR
47	Design, Fabrication, Picklin & Supply of SS-316L Scrub Water Tank 11.42m ³ , API 650, Ø2.5 X 3.2 M Ht.x6 mm thickness.	SFCCL-CHEMANOL Methanol Chemicals Company – Jubail	3/2009 – 4/2009	106,000 SAR
48	Supply and Fabrication of Standard Galvanized Grating 32x5x30x100mm base on the layout drawings for trench covers, 50x6x30x100mm – 370x1000mm for Lt. Vehicle Traffic Road Covers, Building Stair Handrails & Cage Ladders as per SABIC strd's	M. S. Al-Suwaidi Industrial Services Co. Ltd. For Saudi Kayan Project	3/2009 – 5/2009	403,465 SAR
49	Design, Supply, Fabrication, HHR Paiting & Installation of Fume Heater Chimner 32"x20M Lg.	United Lube Oil Co. Ltd. – UNILUBE for Blending Plant PRJ.	4/2009 -5/2009	108,000 SAR
50	Fabrication of Platforms, Cage Ladders & Accessories for Vessel Equipments @ Client Shop.	Gulf Heavy Industries Co. – GHI – II for Saudi kayan Project	5/2009 – 5/2009	15,000 SAR
51	Design, Supply, Fabrication & Installation of ALUMINUM Cage & Ladders for Maintenance Work 05 Units upto 48 Floors, Fire Fighting System Pump House Maint. Access OverHead Crane 5 ton w/ Utilities and CHILLER Maintenance Sked Frame upto 5 ton capacity @45 th Floor with limited access.	Al-SuwaiketTrand. & Cont. Co. – Khobar at DEHRAN TOWER	3/2009 12/2012	719,030 SAR
52	Supply of Material; Stainless Steel 316L, Fabrication and Delivery of Stainless Steel Conical Pump Suction Screen for Class 600 Flange	Gulf Consolidated Contracting Co. Ltd. Al-Kobar, Kingdom of Saudi Arabia	2/2012 to 2/2012	26,700 SAR
53	Supply of Material: Standard Hadeed RE-BARFabrication of BLACK WIRE MESH by 10mm Thk. Re-bar Size 100x100x2400x6000mmetc...Surface: BLACK (New Steel)	INDUSTRIAL BETEILIGUNG SERVICES & CONTRACTING (I.I.c. sa) c/o Hadeed long product expansion	2/2012 to 4/2012	190,000 SAR

شركة نيب تيك للخدمات الصناعية ش.م.و Naibtech Industrial Services Company S.P.C

Fabrication, Offshore Contracting / EPC, Expert in welding of High Pressure Alloys SS, CS Plant, Boiler & Tanks with Fabrication and Erection of Industrial & Housing Building Project



Expert in Welding of High Pressure Alloys SS, CS Plant, Boiler & Tanks Piping with Fabrication and Erection of Industrial & Housing Building Projects.

S/No.	Description of Project	Client & Location	Year	Value of Project
54	Supply of MVSG Units for IPCCO / LWBC Factory and MV Switchgear Metal Clad, Air insulated, indoor type Ip3x, RAL 9003, 13.8kV, 3p, 3w, 60HZ, 630A 25kA for 3Sec , Schneider products, specifications, Overhead Crane (42 ton Capacity) Columns & Brackets (Structural Steel Building 50Mx25Mx12M Height), Supply, Fabrication, Painting & Erection / Installation of Structural Steel Building 50M x 25M x 8M Clr. Ht.	KalimElahi Ansari Est. (KEA) – Jeddah, IPCO – RabighPlusTuch Park Jeddah, Kingdom of Saudi Arabia	2/2014 to 2015	1.560 million SAR
55	FABRICATION & WELDING OF CRANE GIRDER BEAMS AS PER GSW DRAWINGS & MATERIAL INSPECTED BY YOUR ENGINEER's & QUALITY.	GULF STEEL WORKS Jubail, Kingdom of Saudi Arabia	3/2012 to 12/2015	980,000 SAR
56	Fabrication & Supply of SS CIP Unit (8000 Liter) with CS-A36 SKID	Industrial Machinery Est. Jubail, Saudi Arabia	3/2015 to 5/2015	175,000 SAR
57	Supply, Fabrication of Embedded Misc. Metal Works, Truck Intake structures, Puddle Flanges, Ladder Rungs (SS), MS Hoppers, Barrier Molds etc...	Saudi AMANA Contracting Company LLC. - Eastern	1/2013 to 12/2016	348,815 SAR
54	FABRICATION, WELDING, TESTING, PAINTING,ERECTION OF LPG PIPING SYSTEM, Including Electrical & Instrumentation Works (E&I) for JUBAIL INDUSTRIAL CITY II , POLYSILICON , LPG SYSTEM PROJECT – KSA.	NATIONAL GAS CONTRACTING CO. LPG, NG & Cryogenic Systems Equipment Supply & EPCC Services BS & ASME Pressure Vessels, FRP Tanks etc..	1/2014 – 4/2014	595,680 SAR
55	Supply of Materials SS – 304 Flat Bar, Angles etc... Fabrication, Chemical cleaning from welded area and Delivery to your site Grating / Trench Covers.	Saudi Taab Contracting Co. Ltd. Khobar, Saudi Arabia, Jubail Project – Galleria	4/2014 – 6/2014	890,000 SAR
56	Supply of Material: Carbon Steel - A36, Fabrication, Painted per specification and delivery of Pipe Support Clamp with Shoe, Guide & Lug Plate full Single Set as per the BOQ & following Document # GR, SBGH, LP-, SB-001 clamp standard, Except only Fixing of Rubber Insulation & HDG coating. Multiple Trading Orders.	Global Star Est. – Dammam, KSA	1/2014 to 12/2015	1.205 million SAR
57	Fabrication, Assembly / Dismantling and Transportation (BIC Factory to 3 rd party cutting/bending to BIC) of Gas Turbine air inlet ducting. Grade CS S275JR / SS AISI 304L	BIC Factory for Metal Industries – Dammam Saudi Arabia	4/2016 to 12/2017	577,800 SAR
58	Supply, Fabrication / Erection of MS Hoppers, Steel Doors (HD) –160 tons, CS/SS Piping Feed Mill, Security Bearers (Automatic) and others...	Arabian Agricultural Services Company (ARASCO) - Eastern	4/2013 to 12/2017	3.956 million SAR

شركة نايب تيك للخدمات الصناعية ش.م.و Naibtech Industrial Services Company S.P.C

Fabrication, Offshore Contracting / EPC, Expert in welding of High Pressure Alloys SS, CS Plant, Boiler & Tanks with Fabrication and Erection of Industrial & Housing Building Project

Expert in Welding of High Pressure Alloys SS, CS Plant, Boiler & Tanks Piping with Fabrication and Erection of Industrial & Housing Building Projects.



Summary of Completed Projects (Bahrain & GCC)

01	Supply of Carbon Steel & Stainless Pipes & Fittings	Gulf Temperature Sensors , 160,000 BHD
02	Supply of Hattersley Valves & Fittings-THEATER prj	Electrical – Mechanical C (EMCO) 70,000 BHD
03	Supply of Electro Mechanical Material, Pipe, Fittings.	Technip France-BAPCO , 190,000 BHD (2012)
04	Supply of Compression Tubes, Fittings & acces. Etc.	Exterran-TatweerPtlm.. 125,000 BHD (2014)
05	Ramsis Engineering Ltd. - Fasteners	Technip Bahrain-BAPCO Project , 19,000 BHD
06	Supply of Pipe Fittings & Accessories	Delta Industrial Supplies CO.W.L.L. , 25,000 BD
07	Supply of SMLS Pipes, Fittings & Accessories	Wallia Super Coil Tech W.L.L 43,000 BHD
08	Supply of Instrumentation Fittings & Compression Sandvik Tubes / Fitt's.	MCSC – Tatweer Project 57,681 BHD (2012)
09	Construction of Production Facilities, Admin Building and SS-316 Tanks modifications with Erections.	Reckitt Benckiser – TETRA TECH at HIDD 178,500 BHD (2013)
10	Construction of Three (3) Storey Building	Mrs. Fatema Hasan Yousaf Albuainain - 48,000 BD
11	Construction of Villa additional 2 storeys upgrading	Mr. Mohammed Sharif (33,700 BHD – 2016)
12	Construction of Six (6) Storey Building	Mr. Khalid AL Mannai (155,000 BHD – 2016)
13	Construction of Alba Area Precesion Technologies Factory – Ware House	Mr. Mahmood Al Saati (86,000 BHD - 2017)
14	Supply Electro Mechanical Products – For LNG Terminal Project Turnkey	GS E & C Corporation , 110,000 BHD (2017)
15	Supply of Electrical Access... - ITCC	AL KHARAFI & SONS , 9,320 BHD (2019)
16	Supply of New Portable Cabin & USED – 60 units and other Heavy Steel Structural Fabrication Jobs	SEPCOIII Bahrain – AL DUR Power Plant – PHII 66,000 BHD (2019)
17	Supply and Fabrication of Sign Board SWRD Desalination, Al Dur 2	SIDEM Bahrain , 2019 1,625 BHD
18	Fabrication and Supply of Stainless Steel 316L Oil Tank – 180 gallons for KSA SABIC Customers Repeat Order	PAXTON Co. 2014 to Present, 2,500 BHD
19	Fabrication and Supply of Steel Structures, Valves Access & other HD Platform, Trench Covers / Gratings, Guard Rails, Handrails and other steel accessories etc... and “Rain Water GUTTER Work”	NSH - NASSER SAEED AL HAJRI CORPORATION W.L.L 2018 to Present, 265,000 BHD
20	Fabrication and Supply of Steel Structures, Chiller Units (HD) Platform, Trench Covers / Gratings, Guard Rails, Handrails and other steel accessories etc... and “Rain Water GUTTER Work” (ALUMINUM & STEEL).	GAC – Gulf Asia Contracting company P.O BOX No. 11953, SEEF / Manama, Bahrain 2018 to Present, 145,000 BHD
21	Construction of RAMP (Concrete at G1) and Construction of G2 Facilties, Boundary, Bollards K12 Rating Constrete and Steel Structures etc... and New Project Awarded for BDF Land Construcionconsisting of 4 TENT 23,900 m2 LAND Development.	TRIDENT WARE HOUSE Company Bahrain – USA Branch for US Army Logisitics Services Project thru FEDEX Courier, Bahrain HIDD 2014 to Present, 1.143 million BHD
22	Fabrication and Supply of Steel Structure and Platforms etc.	SEPCOIII Bahrain Construction Company S.P.C. – 1st January 2020 (BD90,000.00) to Present
23	Fabrication and Supply of Insert Pipe, Ladder and Handrails etc... for BMP project.	Nasser saeed Al Hajri Corporation W.L.L. – 14 February 2020 (BD36,000) to Present

شركة نيب تيك للخدمات الصناعية ش.م.و Naibtech Industrial Services Company S.P.C

Fabrication, Offshore Contracting / EPC, Expert in welding of High Pressure Alloys SS, CS Plant, Boiler & Tanks with Fabrication and Erection of Industrial & Housing Building Project

Expert in Welding of High Pressure Alloys SS, CS Plant, Boiler & Tanks Piping with Fabrication and Erection of Industrial & Housing Building Projects.



List of Major Completed Supply of IT Order (Pakistan)

✓ **United Bank Limited - Indirect**

Product Details: Huawei MediaPad (2.4 M PKR) Year of Project: 2014

✓ **MCB Bank Limited – Direct**

Product Details: Computers and Surface Pro (1.8 M PKR) Year of Project: 2016

✓ **Maple Leaf Cement - Direct**

Product Details: Networking and supply of Jabra Handset Product (2.2 M PKR) Year of Project: 2015

✓ **Telenor Pakistan – Indirect**

Product Details: Server for Networking (3.62 M PKR) Year of Project: 2015

✓ **DG Cement – Direct**

Product Details: MS Operating Systems andMS Office (3.02 M PKR) Year of Project: 2017

✓ **Outstart Tech – Direct**

Product Details: MS Operating Systems andMS Office, Networking, Laptops (5.4 M PKR) Year of Project: 2014-Till Date

✓ **OLX Pakistan – Direct**

Product Details: Switches for Networking, IT Server Room Requirement (7.8 M PKR) Year of Project: 2014-2016

✓ **Lahore University of Management Sciences (LUMS)- Direct**

Product Details: AIO Computers for IT Lab (2.6 M PKR) Year of Project: 2014-2016

✓ **Institute of Business Administration (IBA-KHI) – Indirect**

Product Details: Desktop Computers for IT Lab (3.6 M PKR) Year of Project: 2015-2017

✓ **NESPAK (Pvt.) Limited Pakistan - Indirect**

Product Details: Cisco Miraki Switches (4.6 M PKR) Year of Project: 2017

✓ **Nestle Pakistan Limited – Direct**

Product Details: Computers, Laptops and Networking solution (5 M PKR) Year of Project: 2017-Till Date

✓ **ZIC Oil Hi-Tech Lubricant Limited- Indirect**

Product Details: Computer acceseries and Networking Solution (1 M PKR) Year of Project: 2017-Till Date

✓ **US- AID Dairy Project - Direct**

Product Details: Computer and IT Peripheriphial (23 M PKR) Year of Project: 2015-2016

شركة نيب تيك للخدمات الصناعية ش.م.و
Naibtech Industrial Services Company S.P.C

Fabrication, Offshore Contracting / EPC, Expert in welding of High Pressure Alloys SS, CS
Plant, Boiler & Tanks with Fabrication and Erection of Industrial & Housing Building Project

Expert in Welding of High Pressure Alloys SS, CS Plant, Boiler & Tanks Piping with Fabrication and Erection of Industrial & Housing Building Projects.



Company
Quality
Policy

Quality Policy

The aim of Naibtech Industrial Services Company (NAIBTECH) is to be placed among the top Middle Eastern industrial vendors. Its mission is to continually exceed the expectations of its customers by providing quality products and services through highly skilled and professional trading and contracting team

NAIBTECH endeavors to satisfy its customers with high quality products and services and short lead time that meet their needs and requirements with respect to its activities in **Trading of Industrial Products in the Instrumentation, Electrical & Mechanical and Fabrication of Industrial Projects and Services after Sales** ”

NAIBTECH'S management and staff are highly committed to establish, implement, maintain and continually improve a quality management system with the framework of the ISO 9001:2008 international standard. This is subsequently done by:

- Setting SMART objectives and target(s) throughout the organization
- Ensuring that these objectives and target(s) are communicated and understood by all employees,
- Taking responsive actions that fulfills achieving the objectives, and
- Monitoring of the performance of the organization in ongoing bases

This will be reviewed at least annually (mostly during management review meeting) for suitability and efficiency. The distribution of this document is controlled by control of documents procedure(**NAIBTECH-QP-01**) because of the possibility of amendments.

Note: Further refer to the official document of (QMS) or **Quality Manual: NBTCH-QM-00**

Company VISION for Quality

Our products are of several market leaders and well-known manufacturers around the world, where the quality is rigidly controlled in accordance with all appliances codes, standards and rules demanded by any project. We strictly abide by the quality with our utmost efforts in order to meet various customers' requirements.

We achieve customer satisfaction by recognizing that quality is everyone's direct responsibility, because we are committed in providing the **Highest Quality Works and Services, especially On Time Delivery** to our customers in the most competitive way. This is of fundamental importance to the continued success of NAIBTECH Industrial Services Co. SPC.

This is achieved through the efforts of each employee taking responsibility for the quality of their work and by them expecting the same high quality work from our suppliers and each other...

All employees through their various skills and expertise are expected to pursue and be continually involved in quality improvements to internal processes.

These objectives are supported by educating and training employees to ensure that they are aware of their contribution to, and the aims of, quality improvement. The work force is also encouraged continually through in-house training programs to create and maintain quality awareness culture throughout all the phases of the work at all the times. The manual forms a basis for quality control practice to the staff of NAIBTECH Industrial Services Co. SPC.

شركة نيب تيك للخدمات الصناعية ش.م.و Naibtech Industrial Services Company S.P.C

Fabrication, Offshore Contracting / EPC, Expert in welding of High Pressure Alloys SS, CS Plant, Boiler & Tanks with Fabrication and Erection of Industrial & Housing Building Project



Expert in Welding of High Pressure Alloys SS, CS Plant, Boiler & Tanks Piping with Fabrication and Erection of Industrial & Housing Building Projects.

Client:				
End of manufacture Report Submittal				
Submittal No.:		Submittal Date:		
CIVIL <input type="checkbox"/>	PIPING <input type="checkbox"/>	ELECTRICAL <input type="checkbox"/>		INSULATION <input type="checkbox"/>
BLDG <input type="checkbox"/>	MECHANIC <input type="checkbox"/>	INSTRUMENT <input type="checkbox"/>		PAINTING <input type="checkbox"/>
NDT <input type="checkbox"/>	NDT <input type="checkbox"/>	HVAC <input type="checkbox"/>		
1. Material Description				
2. Supplier Manufacture		NAIBTECH INDUSTRIAL COMPANY SERVICES S.P.C.		
3. Attached Data		<ol style="list-style-type: none"> 1. Unpriced Purchase Order 2. Inspection Release Certificate 3. Inspection Test Plan 4. Approved Drawings 5. WPS, PQR 6. Record of Qualification of the welder (WPQ) 7. Testing Procedures (NDT) 8. Materials Receiving Inspection Reports & Material Test Certificates 9. Equipment Calibration Certificates (N/A) 10. Non destructive Test Reports 11. Final Dimensional & Final Visual Inspection Reports 12. Hydro Test Reports – (N/A) 13. Operational Test Reports (N/A) 14. Qualification Certificates of Non Destructive Testing Personnel 15. Hot Dip Galvanized And Painting Inspection Reports 16. Painting MDS & Certificates 17. Specific doc. For the Pressure Vessels Directive (N/A) 18. Mechanical Test Report for M24 Anchor Bolts 19. Engineering Drawing 		
REMARKS:				
<input type="checkbox"/> ACCEPTED <input type="checkbox"/> ACCEPTED WITH COMMENTS <input type="checkbox"/> NOT ACCEPTED				
OWNER COMMENTS:				
	Subcontractor	Contractor		Owner
NAME				
POSITION				
SIGNATURE				

شركة نيب تيك للخدمات الصناعية ش.م.و
Naibtech Industrial Services Company S.P.C

Fabrication, Offshore Contracting / EPC, Expert in welding of High Pressure Alloys SS, CS
Plant, Boiler & Tanks with Fabrication and Erection of Industrial & Housing Building Project



Expert in Welding of High Pressure Alloys SS, CS Plant, Boiler & Tanks Piping with Fabrication and Erection of Industrial & Housing Building Projects.

FINAL INSPECTION REPORT CUM RELEASE NOTE


Report No.:	Date:
Customer:	Project Code:
Description:	
<u>Detail of Inspection:</u>	
1. VISUAL - Acceptable <input type="checkbox"/> Not Acceptable <input type="checkbox"/>	
2. Dimensional Inspection - Acceptable <input type="checkbox"/> Not Acceptable <input type="checkbox"/>	
3. Documents - Acceptable <input type="checkbox"/> Not Acceptable <input type="checkbox"/> (In Process, NDT, Coating, Testing & Final Inspection)	
4. Identification - Acceptable <input type="checkbox"/> Not Acceptable <input type="checkbox"/>	
<u>CONCLUSION:</u>	
Acceptable <input type="checkbox"/> Not Acceptable <input type="checkbox"/> Re Work <input type="checkbox"/>	
<u>DISPATCH ADVICE</u>	
NAIBTECH	SEP CO III
NAME:	NAME:
SIGNATURE:	SIGNATURE:
DATE:	DATE:

شركة نايب تيك للخدمات الصناعية ش.م.و Naibtech Industrial Services Company S.P.C

Fabrication, Offshore Contracting / EPC, Expert in welding of High Pressure Alloys SS, CS Plant, Boiler & Tanks with Fabrication and Erection of Industrial & Housing Building Project

Expert in Welding of High Pressure Alloys SS, CS Plant, Boiler & Tanks Piping with Fabrication and Erection of Industrial & Housing Building Projects.



 NAIBTECH INDUSTRIAL SERVICES COMPANY S.P.C Structural and Mechincal Division				MATERIAL RECEIVING INSPECTION REPORT				Project:H2 SHELTER STEEL STRUCTURE			
P.O. NO:				Date:		PAGE:		Project Code			
DELIVERY NOTE NO:				Date:		SUPPLIER:		REPORT NO.			
								DATE			
S NO.	ITEM DESCRIPTION	SIZE		QTY	HEAT NO.	GRADE	CERTIFICATE NO.	ACCEPT QTY	REJECT QTY	REMARKS	
		As per P.O.	ACTUAL								
1											
2											
3											
4											
5											
6											
7											
8											
9											
10											
REMARKS:											
REPRESENTATIVE		QA/QC. INSPECTOR			QA/QC. MANAGER			Client representative			
NAME											
SIGNATURE											
DATE											

شركة نيب تيك للخدمات الصناعية ش.م.و Naibtech Industrial Services Company S.P.C

Fabrication, Offshore Contracting / EPC, Expert in welding of High Pressure Alloys SS, CS Plant, Boiler & Tanks with Fabrication and Erection of Industrial & Housing Building Project

Expert in Welding of High Pressure Alloys SS, CS Plant, Boiler & Tanks Piping with Fabrication and Erection of Industrial & Housing Building Projects.



شركة نيب تيك للخدمات الصناعية ش.م.و Naibtech Industrial Services Company S.P.C																					
Fabrication, Offshore Contracting / EPC, Expert in welding of High Pressure Alloys SS, CS Plant, Boiler & Tanks with Fabrication and Erection of Industrial & Housing Building Project																					
Expert in Welding of High Pressure Alloys SS, CS Plant, Boiler & Tanks Piping with Fabrication and Erection of Industrial & Housing Building Projects.																					
SURFACE PREPARATION AND PAINTING INSPECTION REPORT																					
SL #	Material Description										Unit	Qty	Remarks								
1											NOS.										
AIR QUALITY :											J.O #										
BLASTING MATERIAL :											HS CODE NO :										
Measuring and Test Equipment Details:																					
BLASTING PROFILE READING : avg = 120um											BLASTING SURFACE GRADE : SA 2.5										
SL #	Process	DATE	TIME	WEATHER	DRY	R.H	STEEL	DEW	Note: Refer to attached blasting report SAAR												
#	SURFACE PREPARATION	8-Jan-20	11:00am	Good	TEMP	54	TEMP	POINT							23	12					
PAINTING MANUFACTURED BY : HEMPEL PAINTS																					
PAINTING SYSTEM :																					
AIR QUALITY :																					
Measuring and Test Equipment Details: =																					
Name : Elcometer 458					Serial No. : TL-13588					Calibration ID # UR1-65796 & Due Date : 28-10-2020											
SL #	APPLN	DFT	DATE	TIME	WEATHER CONDITION				DFT INSPECTION FROM DIFFERENT 11 LOCATION												
	OF PAINT	Require (Average)			WEATHER	DRY	RH%	STEEL	DEW	A	B	C	D	E	F	G	H	I	J	K	FINAL
					TEMP				POINT	DRY	DRY	DRY	DRY	DRY	DRY	DRY	DRY	DRY	DRY	DRY	AVERAGE
Prepared by : (QA/QC Eng'r. / Shop)											Approved by :										

شركة نيب تيك للخدمات الصناعية ش.م.و
Naibtech Industrial Services Company S.P.C

Fabrication, Offshore Contracting / EPC, Expert in welding of High Pressure Alloys SS, CS Plant, Boiler & Tanks with Fabrication and Erection of Industrial & Housing Building Project

Expert in Welding of High Pressure Alloys SS, CS Plant, Boiler & Tanks Piping with Fabrication and Erection of Industrial & Housing Building Projects.



STRUCTURAL AND MECHANICAL DIVISION		Project Code:
FINAL DIMENSIONAL REPORT		Report No. :
Project Title:		Date :
Drawing No.:		Client:
Equip. Title:		Item No.:
SKETCH:		

S. No.	DIM	DIMENSIONS			REMARKS
		As per Drawing	Actual Dimension	Deviation	
1					
2					
3					
4					
5					
6					
7					
8					
9					
10					
11					
12					
13					
14					
15					

Checked the Final dimension for above mentioned item and found satisfactory.

Note:

All Dimensions are in Millimeters

NAIBTECH	Main Contractor	CLIENT / Owner
NAME:	NAME:	NAME:
SIGNATURE:	SIGNATURE:	SIGNATURE:
DATE:	DATE:	DATE:

شركة نيب تيك للخدمات الصناعية ش.م.و Naibtech Industrial Services Company S.P.C

Fabrication, Offshore Contracting / EPC, Expert in welding of High Pressure Alloys SS, CS
Plant, Boiler & Tanks with Fabrication and Erection of Industrial & Housing Building Project



Expert in Welding of High Pressure Alloys SS, CS Plant, Boiler & Tanks Piping with Fabrication and Erection of Industrial & Housing Building Projects.

WORK INSTRUCTION FOR LIQUID PENETRANT EXAMINATION (COLOR CONTRAST SOLVENT REMOVABLE METHOD)

Doc. No.: NBT-QC-PT-010

Rev.: 01

Date: 31 March 2019

1.0 PURPOSE

This Instruction covers the requirements for performing liquid penetrant examination using color contrast (solvent removable) penetrant for detecting open surface discontinuities on non-porous ferrous and non-ferrous materials.

2.0 SCOPE

Applicable for Testing of all non-porous ferrous and non-ferrous materials required as per Drawing / Codes / ITP.

3.0 RESPONSIBILITY:

NOT personnel performing the Liquid Penetrant examination shall be qualified Level II as per the requirements of AS/NDT/01 (ASME) / ASNT. Personnel doing interpretation of test results shall be qualified minimum Level II or level III.

4.0 PROCEDURE:

4.1 LIQUID PENETRATION MATERIALS

The following penetrant material are acceptable or use.

MAGNAFLUX	:	CLEANER	-	SKC - S
		PENETRANT	-	SKL- SP
		DEVELOPER	-	SKD - S2
JOHNSON & ALLEN	:	CLEANER	-	JAC
		PENETRANT	-	JAP
		DEVELOPER	-	J.A.D
AMBERSIL (UK)	:	CLEANER	-	FDC1
		PENETRANT	-	FDP2
		DEVELOPER	-	FDD3

All penetrant materials shall be materials from the same manufacturer. Use of penetrant, cleaner or developer from different manufacturer; or brands shall not be permitted. All penetrant materials shall be kept for use in _ their original containers and refilling of these containers shall prohibited.

WORK INSTRUCTION FOR LIQUID PENETRANT EXAMINATION (COLOR CONTRAST SOLVENT REMOVABLE METHOD)

Doc. No.: NBT-QC-PT-010

Rev.: 01

Date: 31 March 2019

All penetrant materials used shall be certified by the manufacturer to be in compliance (as determined by chemical analysis) with the residual Sulphur and halogen requirements of the ASME Code Section V, paragraph T-640. The total residual amount of Sulphur and halogens shall not exceed one percent (1 %) by weight.

4.2 PRE-EXAMINATION SURFACE PREPARATION

Surface preparation by grinding, machining, abrasive blasting may be necessary where surface irregularities could mask indications of unacceptable discontinuities. These processes may decrease the effectiveness of the penetrant examination by smearing or peening over metal surfaces and filling discontinuities open to the surface. In which case acid etching may be required to remove the smeared metal. Etched parts must be rinsed completely free of etchants, the surface neutralized and thoroughly dried prior to application of penetrants.

The surface to be examined and all adjacent areas within at least 1 in. (25mm) shall be dry and free of all dirt, grease, lint scale, welding flux and spatter, oil or other extraneous matter that could obscure surface openings and interfere with the examination.

Solvent cleaning shall be done. If cloth or paper is used it shall be lint free.

After cleaning, drying of the surfaces to be examined shall be accomplished by normal evaporations. Drying time shall be at least 5 minutes.

4.3 EXAMINATION PROCEDURE

4.3.1 PENETRANT APPLICATION

Apply penetrant on the weld and adjacent areas (1") on either side by spraying or by brushing. Take precautions to avoid formation of penetrant pools on the inspection surface.

If necessary, the material surface to be examined shall be shaded or cooled to keep surface temperature between 60°F and 125°F (16°C and 52°C) during the examination.

The dwell time shall minimum 5 minutes and maximum 20 minutes.

Do not allow penetrant to dry. However, if dwell time exceeds 20 minutes or if complete drying occurs before completion of the dwell time, reprocess the surface being examined starting with the initial cleaning. Rewetting (using additional penetrant) is permissible to avoid drying.

WORK INSTRUCTION FOR LIQUID PENETRANT EXAMINATION (COLOR CONTRAST SOLVENT REMOVABLE METHOD)

Doc. No.: NBT-QC-PT-010

Rev.: 01

Date: 31 March 2019

4.3.2 EXCESS PENETRANT REMOVAL

After the specified penetration time has elapsed. Any penetrant remaining on the surface shall be removed by wiping with a lint *tree* cloth. Repeating the operation until most visible traces of penetrant have been removed. The remaining traces shall be removed by lightly wiping the surface with cloth moistened with solvent To minimize removal of penetrant *tram* discontinuities. Care shall be taken to avoid the use of excess solvent. In no case shall direct spraying of solvent onto the surface be carried out.

After excess penetrant removal, the surface may be dried by normal evaporation, blotting, wiping or forced air.

4.3.3 DEVELOPER APPLICATION

The solvent suspended developer shall be applied within 5 minutes after penetrant removal. It shall be applied by spraying to provide a light uniform coating over the entire surface being examined. The aerosol can of developer shall be thoroughly shaken before use. The thickness of developer shall be sufficient to provide contrast but not too thick so as to obscure indications. The required thickness shall be built up by laying down thin layers of developer at a time.

Development Time

Minimum : 7 min. / Maximum : 30 min.

4.4 INTERPRETATION & EVALUATION OF TEST RESULTS

4.4.1 Interpretation

The surface shall be closely observed during the development time to monitor the behavior of indications which tend to bleed-out profusely. Final interpretation shall be made after the minimum development time is over. No artificial light source will be required is inspection is carried out in the open under day light air-conditions. The minimum light level shall be 100 foot candles or 1000 lux. on the surface being inspected.

4.4.2 CLASSIFICATION OF INDICATIONS

Indications produced by liquid penetrant testing are not necessarily defects. Machining marks, scratches. and surface conditions may produce indications that are similar to those produced by discontinuities.

Any indication with a maximum dimension of 1/16 inch. Or less shall be densified as non relevant. Any larger indication believed to be non-relevant shall be regard as relevant until reexamined by liquid penetrant or another non-destructive testing method to determine whether or not an actual discontinuity exists. If surface is ground it shall be etched or otherwise conditioned before re-examination.

WORK INSTRUCTION FOR LIQUID PENETRANT EXAMINATION (COLOR CONTRAST SOLVENT REMOVABLE METHOD)

Doc. No.: NBT-QC-PT-010

Rev.: 01

Date: 31 March 2019

Relevant indications are those caused by discontinuities. Linear indications are those in which the length is more than three times the width. Rounded indications are those in which the length is three times the width or less.

5.0 4.5 ACCEPTANCE STANDARDS REFERANCE:

Indications revealed shall be evaluated to the applicable code shown below;

ASME Section V: 2015 Edition	ASME Section B31.1: 2012 Edition	ASME Section I: 2015 Edition
ASME Section IX: 2015 Edition	ASME Section VIII Div. 1 & 2 2015 Edition	NBIC 23 2015 Edition
	SE-165-09. Standard practice for Liquid Penetrant Examination for Gen Industry	

4.6 REEXAMINATION OF REPAIR AREAS

After repairs have been made, the repaired area shall be blended smoothly into the surrounding area and reexamined by liquid Penetrant method and by all other approved methods of examination that were originally required for the affected area except that when the depth of repair is less than the radiographic sensitivity required re-radiography may be emitted. Selection of an alternate method of NDE shall be approved by the client or the inspection authority.

4.7 POST EXAMINATION CLEANING

Post-examination cleaning shall be performed as soon as possible after the examination. Solvent as applicable shall be used to remove the residual penetrant and developer by spraying or wiping with cloths.

6.0 CROSS REFERANCE:

ASME Sec. IX & ASME Sec. VIII Div. 1

7.0 RECORDS

Record of liquid penetrant examination shall be signed by qualified level II NOT personnel and shall be submitted to the client third party Inspection.

Whenever necessary provide sketches, charts or marked up drawings to show coverage and orientation for clarity and / or to permit duplication of the examination.

7.0 RETENSION PERIOD: 1 Years

شركة نايب تيك للخدمات الصناعية ش.م.و
Naibtech Industrial Services Company S.P.C

Fabrication, Offshore Contracting / EPC, Expert in welding of High Pressure Alloys SS, CS Plant, Boiler & Tanks with Fabrication and Erection of Industrial & Housing Building Project



Expert in Welding of High Pressure Alloys SS, CS Plant, Boiler & Tanks Piping with Fabrication and Erection of Industrial & Housing Building Projects.

**WORK INSTRUCTION FOR
LIQUID PENETRANT EXAMINATION
(COLOR CONTRAST SOLVENT REMOVABLE METHOD)**

Doc. No.: NBT-QC-PT-010

Rev.: 01

Date: 31 March 2019

LIQUID PENETRANT EXAMINATION REPORT	REPORT NO. : _____
	DATE : _____

Client _____	
Project Name & Contract / P.O. No. _____	
Component Description	PIPING () Structures () / Tank ()
Material / Specification Grade: <u>S275 JR</u>	Carbon Steel () Stainless Steel ()
Type of Weld	Fillet and Socket Weld
Surface Condition	As Welded, Smooth & Clean
Procedure No. & Rev.	NBT/QC/PT/010, Rev. 01
Acceptance Criteria / Specification	ASME Code Section V: Ed. 2015 / AWS D1.1
Technique	Color Contrast – Solvent Removable Penetrant
Light Intensity Measured : <u>>1000 LUX</u>	Extent of Examination: <u>10%</u>
Penetrant Application Method	By Brush
Penetrant Removal By	Cleaner / Cloth
Penetrant & Development Time	5 – 10 Minutes
Manufacturer of Penetrant / Developer / Cleaner	MAGNAFLUX / Johnson & Allen/ ambersil
CLEANER Batch No. _____, PENETRANT Batch No. _____, DEVELOPER Batch No. _____	

Summary of Test Result:

Sr. #	Component Ref. Dwg. And or Joint / Weld Identification	THK. DIM.	Welder No.	INTERPRE-TATION	Test Result	Remarks

RAHUL RAJA GOPAL Be. Engr. (Level II)

Senior Mechanical Engineer

Representative Name & Level of Certification:

Signature: _____

شركة نيب تيك للخدمات الصناعية ش.م.و
Naibtech Industrial Services Company S.P.C

Fabrication, Offshore Contracting / EPC, Expert in welding of High Pressure Alloys SS, CS
Plant, Boiler & Tanks with Fabrication and Erection of Industrial & Housing Building Project

Expert in Welding of High Pressure Alloys SS, CS Plant, Boiler & Tanks Piping with Fabrication and Erection of Industrial & Housing Building Projects.



**Safety & loss
prevention
program**

شركة نيب تيك للخدمات الصناعية ش.م.و Naibtech Industrial Services Company S.P.C

Fabrication, Offshore Contracting / EPC, Expert in welding of High Pressure Alloys SS, CS Plant, Boiler & Tanks with Fabrication and Erection of Industrial & Housing Building Project



Expert in Welding of High Pressure Alloys SS, CS Plant, Boiler & Tanks Piping with Fabrication and Erection of Industrial & Housing Building Projects.

SAFETY & LOSS PREVENTION PROGRAM

1) General Procedure

The primary objective of this program is to promote general safety practices and to explain the needs and importance of the safety on site and prevention of accidents. Safety should be considered as a matter of prime importance.

2) Plan of Action

In order to achieve the above mentioned goal the following courses of action should be put into effect.

- 2.1 Safety orientation of new employees.
- 2.2 Educate employees explaining in detail the necessity and importance of personal safety and that of equipment.
- 2.3 Maintain good housekeeping in all areas.
- 2.4 Enforce safety rules and regulations.
- 2.5 Organize accident prevention committee.
- 2.6 Hazard elimination through systematic inspection and use of protective gear and the right tools for an appropriate job.
- 2.7 Strict adherence to the loss prevention requirements of Saudi
- 2.8 Armco's safety standards and applicable to Saudi Arabian Laws.

3) Program

3.1 Planning safety in engineering & estimates preparation

In the planning and estimate preparation stage a thought for the period of consideration, studies shall be made by the engineers to ensure adequate safety factors in design and erection of temporary structures and staging.

- 3.1.1 Adequate monetary allocation to provide for items such as trench bracing, barricades, signs work platforms, personal protective equipment and other items necessary for the protection of employees, equipment, materials and members of general public and their property.
- 3.1.2 System shall be established where by plans and procedures involving hazards to men, materials, equipment and adjacent property can be studied and reviewed with proper authorities for necessary precautionary measures.

شركة نيب تيك للخدمات الصناعية ش.م.و Naibtech Industrial Services Company S.P.C

Fabrication, Offshore Contracting / EPC, Expert in welding of High Pressure Alloys SS, CS Plant, Boiler & Tanks with Fabrication and Erection of Industrial & Housing Building Project



Expert in Welding of High Pressure Alloys SS, CS Plant, Boiler & Tanks Piping with Fabrication and Erection of Industrial & Housing Building Projects.

3.2 Safety Meeting

Before starting up the job, key Personnel should meet to discuss accident prevention, study job layouts, determine plans and schedules, also emphasize requirements and elaborate procedures. Thorough inspection of job site and collaborate procedures. Through inspection of job site and adjoining procedures shall be done and a brief supplemental safety programmed will be developed and distributed to supervisory Personnel assigned to jobsite.

- 3.2.1 Weekly safety meetings for supervisory Personnel to review accidents that occurred during the previous week, take note of safety deficiencies and establish measures, job hazards, contemplated control, protective equipment and Personnel training should be covered.
- 3.2.2 A ten minted tools box meeting shall be held once week under the direction of foreman and assisted safety Personnel. Accidents and near-accident should be discussed and present action to prevent recurrence foreman will explain the safe way performing job. From time to time superintendent and other key Personnel shall also attend the meetings on rotation basis.
- 3.2.3 Records will be kept spelling out the meeting data who conducts the meeting and summary of discuss which will be forwarded to project engineer.

3.3 Employees Selection

We always hire the appropriate man to the right job. Dispite the fact that labor shortage in some areas in acute especially for skilled manpower, every effort is being made by the management to see to it that only physically for workers are selected, this is one important fact to preventing accidents that our management has given a reconsideration, good physical condition is of precipitance for employees under Bahrain, Saudi Arabian& GCC climate conditions, particularly vehicle and equipment operators.

3.4 Craftsman Training

Daily safety contact of craftsman is one of the move effective ways of training our employees. Safety as part construction can be emphasized here as the foreman explain the "that" "how" "where" and "why" of the workers.

- 3.4.1 The following subject shall be discussed in the employee's safety induction training.
 - 3.4.1.1 Hazards on the work site.
 - 3.4.1.2 Necessary precautions against the above hazards.
 - 3.4.1.3 Personal protective equipment.

شركة نيب تيك للخدمات الصناعية ش.م.و Naibtech Industrial Services Company S.P.C

Fabrication, Offshore Contracting / EPC, Expert in welding of High Pressure Alloys SS, CS Plant, Boiler & Tanks with Fabrication and Erection of Industrial & Housing Building Project



Expert in Welding of High Pressure Alloys SS, CS Plant, Boiler & Tanks Piping with Fabrication and Erection of Industrial & Housing Building Projects.

- 3.4.1.4 Ladders and scaffoldings
- 3.4.1.5 Housekeeping and sanitation
- 3.4.1.6 Lift devices and materials handling
- 3.4.1.7 First aid and emergency procedures.
- 3.4.1.8 Fire protection and control
- 3.4.1.9 Reporting injuries and unsafe conditions
- 3.4.1.10 Safety rules and regulations and discipline.
- 3.4.1.11 Responsibility in safety.

3.4.2 In addition to the above topics the following procedural guidelines shall be emphasized to the workers. These shall include:

- 3.4.2.1 Welding and cutting equipment
- 3.4.2.2 Hand and portable tools
- 3.4.2.3 Ladders and scaffolding
- 3.4.2.4 Cranes and rigging equipment and practices
- 3.4.2.5 Excavation, trenching and shoring
- 3.4.2.6 Electrical installation and equipment
- 3.4.2.7 Highway and street construction
- 3.4.2.8 Work permit system

3.5 Safety and Training Education

Training is one of the most important responsibilities of management and accordingly there should be a continuing effort to help supervisory Personnel in carrying out their management functions in order to accomplish this, key Personnel must be trained first before they can become competent instructors.

3.5.1 Supervisor / Foreman Training

Most of our foreman are selected from construction crew and elevated to supervision on the basis of their craft skills. They also possess the certificate to take work permits. Regardless of whether the foreman has been promoted from the ranks, within the company or hired from outside, he shall be given supervisory training and understanding of his responsibilities, both in accident prevention and direction of work. The following topics shall be covered during the foreman's training.

- 3.5.1.1 Accident prevention organization
- 3.5.1.2 Personal protection
- 3.5.1.3 Scaffolding and ladders
- 3.5.1.4 Housekeeping, sanitation and first aid
- 3.5.1.5 Welding and cutting

شركة نيب تيك للخدمات الصناعية ش.م.و Naibtech Industrial Services Company S.P.C

Fabrication, Offshore Contracting / EPC, Expert in welding of High Pressure Alloys SS, CS Plant, Boiler & Tanks with Fabrication and Erection of Industrial & Housing Building Project



Expert in Welding of High Pressure Alloys SS, CS Plant, Boiler & Tanks Piping with Fabrication and Erection of Industrial & Housing Building Projects.

- 3.5.1.6 Flammable gases and liquids
- 3.5.1.7 Excavation and shoring
- 3.5.1.8 Concrete construction / steel erection
- 3.5.1.9 Hoist, cranes and rigging
- 3.5.1.10 Traffic control
- 3.5.1.11 Heavy equipment, motor trucks.
- 3.5.1.12 Tools-hand, power, pneumatic
- 3.5.1.13 Work permit procedures
- 3.5.1.14 Repair shops and garbage's

3.6 Employee Orientation and Indoctrination in Safety

- 3.6.1 Following the selection processing, the employee should be given a brief orientation of the company's safety policies. A brochure of safety rules, in addition to the oral orientation will be given to each new employee before he is instructed to the supervisor.
- 3.6.2 The supervisor should then review the specified hazards and safety rules related to the employee's assignment and introduce him to his fellow workers. Whenever possible place the new employee with an experienced worker who can aid him in promoting safety habits. After a few weeks a follow-up orientation should be conducted reiterating what has been previously said about the company's interest in accident prevention.
- 3.6.3 A record shall be kept on each employee completing the orientation course.

3.7 Correcting Unsafe Acts or Conditions

Generally, accident's result from two sources, unsafe acts and/or conditions, key Personnel should make it a standard practice to look for unsafe acts and conditions on every visit to the job, and to call these to the attention of the superintendent in-charge, demanding immediate correction, when conditions are extremely serious, and the lives of the workers are in jeopardy, they should be corrected at once.

Frequent inspection of the site should be made and a list of violation noted for use and discussion at next safety surveys of the jobsite, safety committee should tour the premises on schedules at regular intervals.

شركة نيب تيك للخدمات الصناعية ش.م.و Naibtech Industrial Services Company S.P.C

Fabrication, Offshore Contracting / EPC, Expert in welding of High Pressure Alloys SS, CS
Plant, Boiler & Tanks with Fabrication and Erection of Industrial & Housing Building Project



Expert in Welding of High Pressure Alloys SS, CS Plant, Boiler & Tanks Piping with Fabrication and Erection of Industrial & Housing Building Projects.

3.8 Accident Reports and Records

The purpose of accident investigation is to provide information to the management so that preventive measures can be instituted to ever similar incident future.

Supervisor conducting the investigation should not view his findings from fault fining angle injury and damage reports shall promptly be made and circulated to all concerned for proper precautionary measures. A copy of this investigation report should be sent the safety officer to ensure that follow-up measures are carried through.

All accident including "near misses" should be investigated so that appropriate action to prevent recurrence can be made, more serious accident should be detailed in narrative form.

- 3.8.1 Injuries at job site will be handled at site itself for minor first aids. For other injuries and sickness we have retained the services of KANOO Health Medical Centers, Tel 8000 7000 and this prevention of medical care will meet the requirements of SAG labor code.

شركة نيب تيك للخدمات الصناعية ش.م.و
Naibtech Industrial Services Company S.P.C

Fabrication, Offshore Contracting / EPC, Expert in welding of High Pressure Alloys SS, CS
Plant, Boiler & Tanks with Fabrication and Erection of Industrial & Housing Building Project

Expert in Welding of High Pressure Alloys SS, CS Plant, Boiler & Tanks Piping with Fabrication and Erection of Industrial & Housing Building Projects.



**A brief List of
our G.C.C.
Customers**

شركة نيب تيك للخدمات الصناعية ش.م.و Naibtech Industrial Services Company S.P.C

Fabrication, Offshore Contracting / EPC, Expert in welding of High Pressure Alloys SS, CS Plant, Boiler & Tanks with Fabrication and Erection of Industrial & Housing Building Project



Expert in Welding of High Pressure Alloys SS, CS Plant, Boiler & Tanks Piping with Fabrication and Erection of Industrial & Housing Building Projects.

List of Major Customers (Saudi Arabia)

- | | |
|-----------------------------------------------------------|------------------------------------------------------------------|
| ✓ Saudi Basic Industries Corporation (Indirect Business) | ✓ Technical Sources Contracting Co. - Direct |
| ✓ Saudi Iron & Steel Company (Indirect HADEED) | ✓ JANA / HASSAD / SODA – Indirect |
| ✓ Saudi International Petrochemical Co.(Indirect - SIPC) | ✓ United Gulf Steel Co. – Direct |
| ✓ Tamimi Company (TAFGA) - Direct | ✓ CHEMANOL – Direct |
| ✓ Al-Saleh Cont. Company - Direct | ✓ Al-Zehrani Trad. & Contracting Co. – Direct |
| ✓ M. K. Cable (Pvt.) Ltd. (SAUDI EGGA) - Direct | ✓ Gulf Packaging Industries Co. – Direct |
| ✓ Al-Akhdood Company - Direct | ✓ DONG SUNG SAUDIA – Direct |
| ✓ Eastern Province Cement Company. (EPCC) - Indirect | ✓ HYUNDAI Heavy Ind. Co. – Indirect |
| ✓ United Lube Oil Company Ltd. - Direct | ✓ OLAYAN DESCON – Indirect |
| ✓ IBN-HAYYAN Plastic Products Co. (TAYF) - Direct | ✓ MISA – Maritime Industrial Services Arabia Co. Ltd. Direct |
| ✓ Saudi Binladin Group (SBG-PCM) - Direct | ✓ Fluor Arabian Canada Ltd. – Direct |
| ✓ AK Group of Partners - Direct | ✓ SIPChem – Saudi International Petrochemical Company-Direct |
| ✓ INMA Steel Industry - Indirect | ✓ Al Suwaike Trad. & Cont. Co. – Khobar - Direct |
| ✓ Al-Gaswa Support Industry Pvt. Ltd. - Direct | ✓ Euro Village – Group of Al-Suwaiket - Direct |
| ✓ Mitsubishi Company - Indirect | ✓ Mutlaq Abdul Rahman Al-Otaibi – Saudi Owner |
| ✓ Kalma Cont. Est. (United Gulf Steel Industry). | ✓ Energy Engineering Services – Vessel Heads Jubail– Direct |
| ✓ Azmil Construction Corporation - Direct | ✓ M. S. Al-Suwaidi Industrial Services Co. Ltd., Jubail – Direct |
| ✓ Samsung SIPC (Indirect). | ✓ Gulf Heavy Industries – GHI II, Jubail - Direct |
| ✓ AL-HARBI Trading & Contracting Company – Direct | ✓ Industrial Energy Services for LPG Systems – Direct |
| ✓ SAUDI PAN GULF (Gulf Grating Ind.) – Direct | ✓ Linde Arabian Cont. Co., Jubail – Indirect. |

List of Major Customers

(Bahrain & Other GCC)

- | | |
|--------------------------------------------------------|----------------------------------------------------------------------|
| Gulf Temperature Sensors Company WLL , Bahrain– Direct | TRIDENT Engineering & Procurement Inc. – Bahrain – Direct |
| National Petroleum Services Co., RasZuwayed, Bahrain | GS E & C Corporation – LNG Project, Bahrain |
| Zarkon Construction & Trading Co., Manama, Bahrain | SEPCO111 Bahrain – Bahrain Al DurPhase II Independent |
| Hassan Ebrahim Bukamal & Sons, WLL, Manama, Bahrain | Water and Power . |
| Moh'd Jawad Group of Companies S.P.C., Seef, Bahrain | SIDEM Bahrain – SWRO Desalination, Aldur 2 Project |
| NASS Corporation, Manama, Bahrain – Direct | AL-KHARAFI & Sons – Bahrain – Direct |
| Samsung Corporation, Hidd, Bahrain-Direct | GAC – Gulf Asia Contracting company |
| Technip (France), for BAPCO Project , Bahrain | NSH - NASSER SAEED AL HAJRI CORPORATION W.L.L. |
| Electrical – Mechanical Co. (EMCO), Bahrain | PAXTON Co. – BAHRAIN / KSA SABIC Industries. |
| Exterran Co., for Tatweer Petroleum Project | |

شركة نيب تيك للخدمات الصناعية ش.م.و Naibtech Industrial Services Company S.P.C

Fabrication, Offshore Contracting / EPC, Expert in welding of High Pressure Alloys SS, CS
Plant, Boiler & Tanks with Fabrication and Erection of Industrial & Housing Building Project

Expert in Welding of High Pressure Alloys SS, CS Plant, Boiler & Tanks Piping with Fabrication and Erection of Industrial & Housing Building Projects.



METHOD OF OPERATING (TRADING DIVISION)

شركة نيب تيك للخدمات الصناعية ش.م.و Naibtech Industrial Services Company S.P.C

Fabrication, Offshore Contracting / EPC, Expert in welding of High Pressure Alloys SS, CS
Plant, Boiler & Tanks with Fabrication and Erection of Industrial & Housing Building Project

Expert in Welding of High Pressure Alloys SS, CS Plant, Boiler & Tanks Piping with Fabrication and Erection of Industrial & Housing Building Projects.



Method of Operating (Trading Division)

Our experience has taught us to anticipate what the end-user is looking for and what does work best in a particular situation. **NAIBTECH INDUSTRIAL SERVICES CO. SPC.** Supports our customer to know how the product works with applicable services, its advantage and how it best fits into our customer actual requirement. Knowledge of the product in advanced enables us to handle most situations. Hence, we are in the answer business. We envisage our customers' question and we give the right answer with appropriate solution.

As a supplier of industrial Thermocouples, Thermo wells with instrumentation accessories and Pipes & Fittings, NAIBTECH Industrial Services Co. SPC.Est. for Gen. Contracting & Trading handles only quality product lines. We will not dilute our effort by having competing lines, nor will we distract our focus by adding product lines in retail or hardware markets.

By having quality lines that work well together, we continue to increase our reputation as well as the reputation of the products we offer. We make sure each customer knows what product and service we offer.

NAIBTECH INDUSTRIAL SERVICES CO. SPC. also has the ability and the desire to stock products that are mainly required by our customer and the market. This provides a great service and benefit that many traders do not offer as a stocking representative, our product have a local inventory that gives the customer instant access. By having many products on-hand it gives us the opportunity to learn a great deal it through actual hands-on investigation. Stocking products allows us immediate access to sample when needed.

Pre-Sale and Post –Sale Support

We do offer our customer both pre-sale and post-sale support.

Pre –Sale Support includes timely response to request for information and keeping the customer informed of current product update and job quotations. During the sale, **NAIBTECH INDUSTRIAL SERVICES CO. SPC.** makes sure that each order is expedited and the customer is informed of its status.

Post-Sale Support includes follow –up calls as well as the help with installation and other obstacles that may occur. We also understand that will be problem from time to time, for which we have created a feedback system to deal with complaints in a timely and orderly fashion.

General Manager

Date: 01:07:2018

شركة نيب تيك للخدمات الصناعية ش.م.و
Naibtech Industrial Services Company S.P.C

Fabrication, Offshore Contracting / EPC, Expert in welding of High Pressure Alloys SS, CS
Plant, Boiler & Tanks with Fabrication and Erection of Industrial & Housing Building Project

Expert in Welding of High Pressure Alloys SS, CS Plant, Boiler & Tanks Piping with Fabrication and Erection of Industrial & Housing Building Projects.



**General
PRODUCT
Catalogue**

شركة نايب تيك للخدمات الصناعية ش.م.ش و Naibtech Industrial Services Company S.P.C

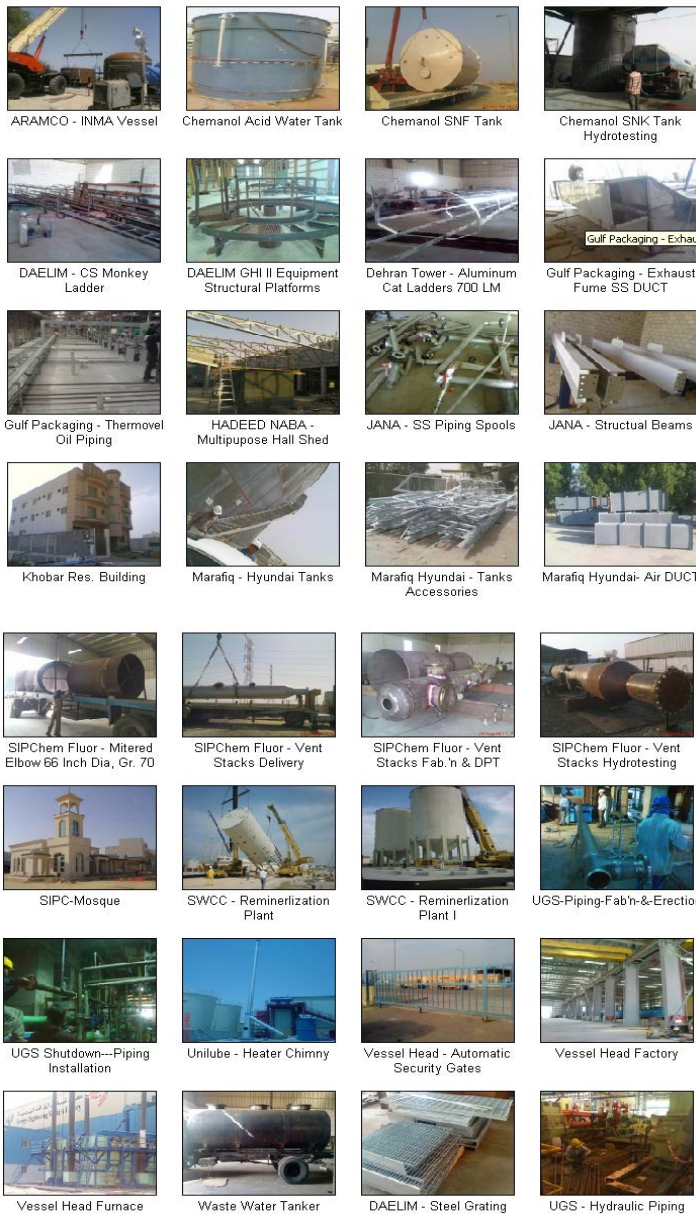
Fabrication, Offshore Contracting / EPC, Expert in welding of High Pressure Alloys SS, CS Plant, Boiler & Tanks with Fabrication and Erection of Industrial & Housing Building Project

Expert in Welding of High Pressure Alloys SS, CS Plant, Boiler & Tanks Piping with Fabrication and Erection of Industrial & Housing Building Projects.



GENERAL PRODUCTS catalogue / BROCHURE

FABRICATION / Manufacturing



INSTRUMENTATION / AUTOMATION



Advance Automation!!!
Forget other expensive brands such as SIEMENS, MITSUBISHI, ABB, FUJI, ABB, TD for your particular automation applications or requirements. These companies, reliable and pre-engineered packaged automation solutions are available from HUNCH Automation.

Benefits to customers:

- Get responsive hardware, software such as PLC, touch screens, automatic module practical operations or programming software, communication drivers and SCADA software as per selection.
- Verify flexible and compact hardware PLC systems, just check the compact system according to your requirement, as well as software communication protocol. Execution can be completed within hours.
- Get complete pre-engineered package with tested applications and installed suitable hardware as per customer or process demand.
- Customer can get complete solution within 10-20% of cost with same specifications as compare with other renowned brands.
- Customer do not select second-rate, poor quality and substandard products for your application, you may get upset from customer support, warranty claim as well as flexibility issues as per customer's application demand.
- Customer may also face problems and getting upset from other renowned brands such as delivery delays, responsive and delayed customer support, experience and integration with other PLC, DCS or other control systems.

Pre-Engineered Packaged Solutions:

- Water control - BMS (Batter Management System) + Data acquisition & control.
- Intuitive monitoring machine control.
- 3-Element boiler drum level control.
- Flexible RTU capabilities level measurement system.
- Flow monitoring - Tanking (water, gas, steam, oil).
- Energy Management System (EMS) for energy conservation.
- Remote monitoring solution for generator sets (DG/UPS based).
- Water control system for diesel generator sets.
- Telephony (GSM/GPRS) based for fire alarm and many more...



Stop thinking about other brands!!
SIEMENS, MITSUBISHI, ABB, AD

Stop REVERSE ENGINEERING

Move to Pre-Engineered PACKAGED SOLUTIONS



In many projects SIEMENS, LG, MITSUBISHI and ABB PLC systems has been successfully replaced with our packaged solutions.

Complete / Compact / Functional complete: Inverter, Fan, Filter, Chiller, MFC, etc.

Labors, Pakistan
Ph: 042-3433333, Fax: 042-3433332
Email: info@hunch.com.pk
Website: www.hunch.com.pk



PACKAGED SOLUTIONS Pre-Engineered 01 INTELLIGENT FEED WATER CONTROL SYSTEM HUNCH

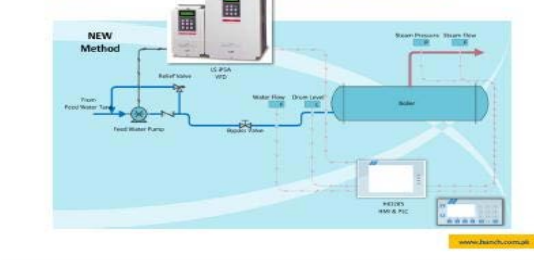
The Intelligent Feed Water Control System is pre-engineered specifically for better feed water pumps, making the benefits of variable frequency drive (VFD) technology. By incorporating pump-specific system optimization software, an industrial grade AC drive (Siemens LS) and intuitive menu-driven user interface (Siemens SIMATIC), this system offers productivity, reliability and ease of use not possible with other variable frequency drives and control systems. Most importantly, the system enables end users to lower their total cost of pump ownership.

Features & Benefits

- Unique pump-specific user interface
- Quick-start setup and configuration
- Pre-engineered pump production features
- Advanced VFD (Siemens) design for pump application from 1.5 (L.C.)
- Start/stop and run/stop capability
- Optimally sized pump systems
- Improved performance
- Lower initial pump cost
- Reduced power consumption with energy savings up to 60%
- Increased Mean Time Between Repairs (MTBR)
- Reduced maintenance costs
- Reduced equipment wear
- Reduced inventory
- Intelligent feed water control system for high pressure boilers (especially for water tube boilers)



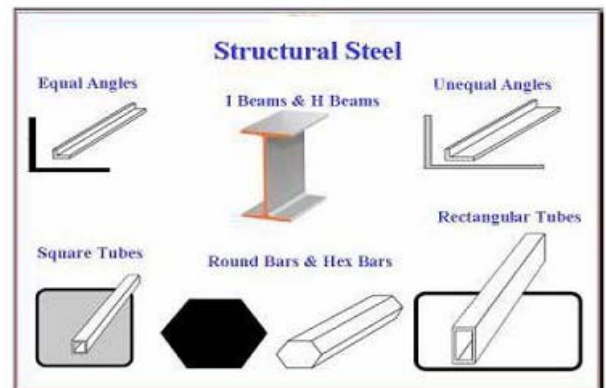
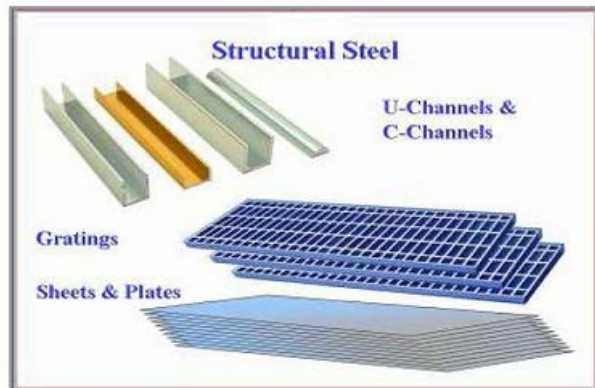
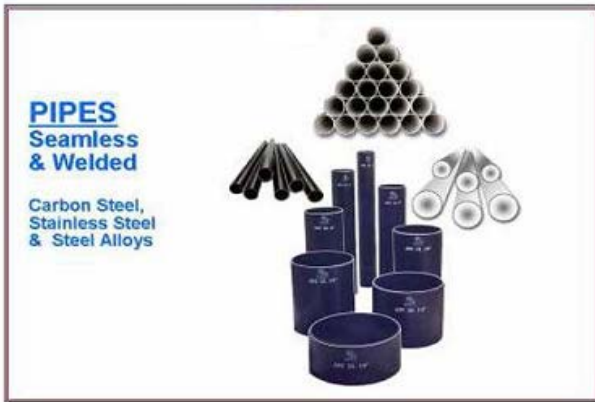
- Pre-programmed packaged solution plug & play installation (single day turnkey)
- Full turnkey turnkey system with PLC (pre-programmed), motor drive (pre-programmed)
- Local display touch screen for easy parameter customization
- Data acquisition data logging, trends & alarm printing (optional)
- Highly & consistent control pressure, flow level (per application level)
- Remotely control complete advanced boiler feed water control system
- Energy saving system
- No need of control valve
- System could almost zero cost as compare with DCS or PLC/PLC
- Pre-arranged tags & icon ports for the integration with DCS or PLC/PLC
- Fullback within a minute only by saving electrical energy cost (replacement of pump life as added advantage)



شركة نايب تيك للخدمات الصناعية ش.م.و Naibtech Industrial Services Company S.P.C

Fabrication, Offshore Contracting / EPC, Expert in welding of High Pressure Alloys SS, CS Plant, Boiler & Tanks with Fabrication and Erection of Industrial & Housing Building Project

Expert in Welding of High Pressure Alloys SS, CS Plant, Boiler & Tanks Piping with Fabrication and Erection of Industrial & Housing Building Projects.



شركة نيب تيك للخدمات الصناعية ش.م.و
Naibtech Industrial Services Company S.P.C

Fabrication, Offshore Contracting / EPC, Expert in welding of High Pressure Alloys SS, CS
Plant, Boiler & Tanks with Fabrication and Erection of Industrial & Housing Building Project

Expert in Welding of High Pressure Alloys SS, CS Plant, Boiler & Tanks Piping with Fabrication and Erection of Industrial & Housing Building Projects.



**Project
Highlights**
(Imported
pictures)

شركة نيب تيك للخدمات الصناعية ش.م.و Naibtech Industrial Services Company S.P.C

Fabrication, Offshore Contracting / EPC, Expert in welding of High Pressure Alloys SS, CS
Plant, Boiler & Tanks with Fabrication and Erection of Industrial & Housing Building Project

Expert in Welding of High Pressure Alloys SS, CS Plant, Boiler & Tanks Piping with Fabrication and Erection of Industrial & Housing Building Projects.



SOME OF THE SITE HIGHLIGHTS AS ABOVE NOTED SUMMARY OF COMPLETED Civil Projects

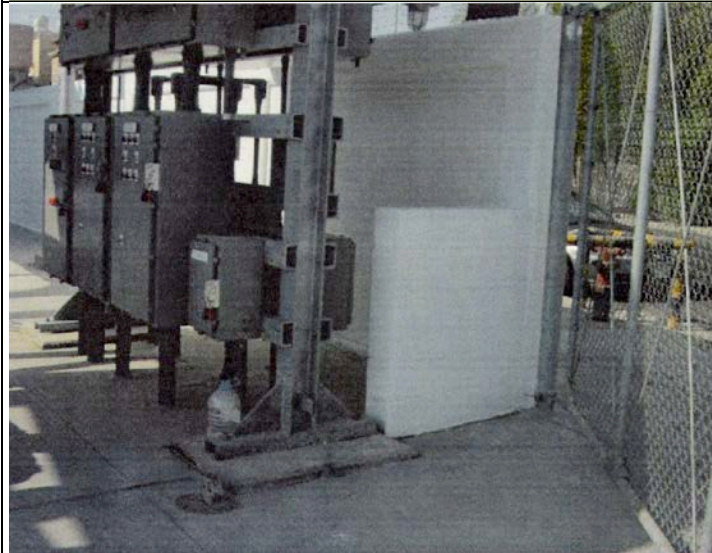


شركة نايب تيك للخدمات الصناعية ش.م.و Naibtech Industrial Services Company S.P.C

Fabrication, Offshore Contracting / EPC, Expert in welding of High Pressure Alloys SS, CS Plant, Boiler & Tanks with Fabrication and Erection of Industrial & Housing Building Project



Expert in Welding of High Pressure Alloys SS, CS Plant, Boiler & Tanks Piping with Fabrication and Erection of Industrial & Housing Building Projects.



شركة نيب تيك للخدمات الصناعية ش.م.و Naibtech Industrial Services Company S.P.C

Fabrication, Offshore Contracting / EPC, Expert in welding of High Pressure Alloys SS, CS
Plant, Boiler & Tanks with Fabrication and Erection of Industrial & Housing Building Project



Expert in Welding of High Pressure Alloys SS, CS Plant, Boiler & Tanks Piping with Fabrication and Erection of Industrial & Housing Building Projects.



شركة نيب تيك للخدمات الصناعية ش.م.و Naibtech Industrial Services Company S.P.C

Fabrication, Offshore Contracting / EPC, Expert in welding of High Pressure Alloys SS, CS
Plant, Boiler & Tanks with Fabrication and Erection of Industrial & Housing Building Project



Expert in Welding of High Pressure Alloys SS, CS Plant, Boiler & Tanks Piping with Fabrication and Erection of Industrial & Housing Building Projects.



Fabrication of 120 ton Suffer Converter Vessel through INMA Steel Industry for ARAMCO – Khursaniyah Project

شركة نيب تيك للخدمات الصناعية ش.م.و Naibtech Industrial Services Company S.P.C

Fabrication, Offshore Contracting / EPC, Expert in welding of High Pressure Alloys SS, CS
Plant, Boiler & Tanks with Fabrication and Erection of Industrial & Housing Building Project



Expert in Welding of High Pressure Alloys SS, CS Plant, Boiler & Tanks Piping with Fabrication and Erection of Industrial & Housing Building Projects.

CONSTRUCTION of 3500M² BUILDING Opposite Rashid Mall-Khobar



شركة نيب تيك للخدمات الصناعية ش.م.و Naibtech Industrial Services Company S.P.C

Fabrication, Offshore Contracting / EPC, Expert in welding of High Pressure Alloys SS, CS Plant, Boiler & Tanks with Fabrication and Erection of Industrial & Housing Building Project



Expert in Welding of High Pressure Alloys SS, CS Plant, Boiler & Tanks Piping with Fabrication and Erection of Industrial & Housing Building Projects.





شركة نيب تيك للخدمات الصناعية ش.م.و
NAIBTECH Industrial Services Company S.P.C



Expert In Welding of High Pressure Alloys SS,CS Plant,Boiler & Tanks
with Fabrication and Erection of Industrial & Housing Building Project

CR No: 105613 - 2, PO Box: 38506, Tel: 77166539, Mob: 36178111, 66952244
Email: bdmnig@gmail.com, website: info@nig-bh.com, website: www.nig-bh.com



شركة نيب تيك للخدمات الصناعية ش.م.و Naibtech Industrial Services Company S.P.C

Fabrication, Offshore Contracting / EPC, Expert in welding of High Pressure Alloys SS, CS
Plant, Boiler & Tanks with Fabrication and Erection of Industrial & Housing Building Project



Expert in Welding of High Pressure Alloys SS, CS Plant, Boiler & Tanks Piping with Fabrication and Erection of Industrial & Housing Building Projects.



شركة نايب تيك للخدمات الصناعية ش.م.و Naibtech Industrial Services Company S.P.C

Fabrication, Offshore Contracting / EPC, Expert in welding of High Pressure Alloys SS, CS
Plant, Boiler & Tanks with Fabrication and Erection of Industrial & Housing Building Project



Expert in Welding of High Pressure Alloys SS, CS Plant, Boiler & Tanks Piping with Fabrication and Erection of Industrial & Housing Building Projects.



شركة نيب تيك للخدمات الصناعية ش.م.و Naibtech Industrial Services Company S.P.C

Fabrication, Offshore Contracting / EPC, Expert in welding of High Pressure Alloys SS, CS Plant, Boiler & Tanks with Fabrication and Erection of Industrial & Housing Building Project

Expert in Welding of High Pressure Alloys SS, CS Plant, Boiler & Tanks Piping with Fabrication and Erection of Industrial & Housing Building Projects.



NAIBTECH OFFICE - MANAGEMENT



RECEPTION



SALES DEPARTMENT - OFFICE



TECHNICAL / OPERATION DEPARTMENT



MEETING ROOM



RECEPTION



MD OFFICE